

P.F.C.

P.F.C. 196	6
P.F.C. 174	8
P.F.C. 154	10
P.F.C. 135	12
P.F.C. 116	14

P.F.

P.F. 196	16
P.F. 174	18
P.F. 154	20
P.F. 135	22
P.F. 116	24

P.F.B.

P.F.B. 196	26
P.F.B. 174	28

P.F.R.

P.F.R. 221	30
P.F.R. 196	32
P.F.R. 174	34

P.F.R.S.

P.F.R.S. 221	36
P.F.R.S. 196	38
P.F.R.S. 174	40

P.F.S.

P.F.S. 174	42
P.F.S. 154	44
P.F.S. 135	46

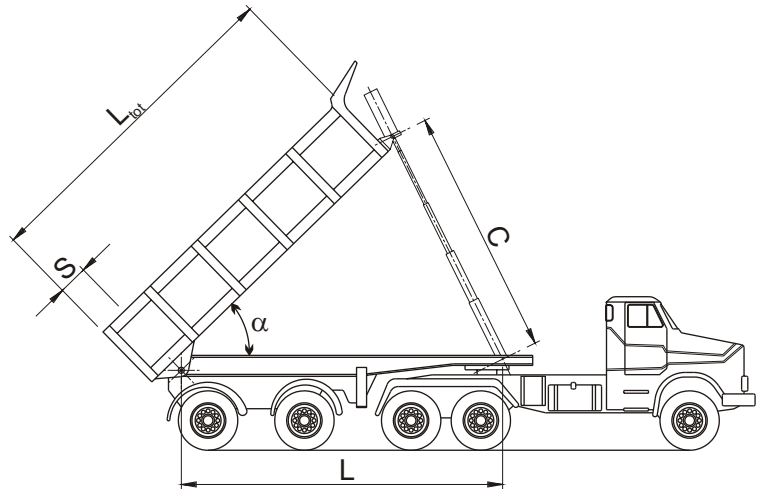
DIAGRAMA; DIAGRAM; DIAGRAMM; DIAGRAM	48
--------------------------------------	-------	----

L [mm]	Billentés szöge - Body tilting - Angles d'inclinaison - Pritschenneigung					
	$\alpha [^\circ]$					
	40	45	48	50	55	60
4000	2736	3061	3254	3381	3694	4000
4500	3078	3444	3661	3804	4156	4500
5000	3420	3827	4067	4226	4617	5000
5300	3625	4056	4311	4480	4895	5300
5600	3831	4286	4555	4733	5172	5600
6000	4104	4592	4881	5071	5541	6000
6300	4309	4822	5125	5325	5818	6300
6600	4515	5051	5369	5579	6095	6600
7000	4788	5358	5694	5917	6464	7000
7300	4993	5587	5938	6170	6742	7300
7600	5199	5817	6182	6424	7019	7600
8000	5472	6123	6508	6762	7388	8000
8300	5678	6353	6752	7015	7665	8300
8600	5883	6582	6996	7269	7942	8600
9000	6156	6888	7321	7607	8311	9000
9300	6362	7118	7565	7861	8589	9300
9600	6567	7348	7809	8114	8866	9600
10000	6840	7654	8135	8452	9235	10000
10500	7182	8036	8541	8875	9697	10500
11000	7524	8419	8948	9298	10158	11000

Lökethossz; Stroke; Course; Hub [mm]

$$C_{[mm]} = 2L_{[mm]} \sin\left(\frac{\alpha_{[rad]}}{2}\right) \Rightarrow$$

$$\Rightarrow C_{[mm]} \cong \frac{3,1416}{180} \cdot \alpha_{[^\circ]} \cdot L_{[mm]} \cdot \left(1 - \frac{9,8696}{777600} \alpha_{[^\circ]}^2\right)$$



Tagok; Extension; Expansion; Verlängerung;	Nyomás; Pressure; Pression; Drukwerte						
	[bar]						
	50	75	100	125	150	175	200
61	15	22	29	37	44	51	0
79	25	37	49	61	74	86	0
98	38	57	75	94	113	132	0
116	53	79	106	132	159	185	0
135	72	107	143	179	215	250	0
154	93	140	186	233	279	326	0
174	119	178	238	297	357	416	0
196	151	226	302	377	453	528	0
221.5	193	289	385	482	578	674	0

Ø [mm] Erő; Thrust; Pousse; Kraft [kN]

$$S_{[kN]} = \frac{\pi}{4} d_{[mm]}^2 \frac{P_{[bar]}}{10000} \Rightarrow$$

$$\Rightarrow S_{[kN]} \cong \frac{0,785}{10000} d_{[mm]}^2 P_{[bar]}$$

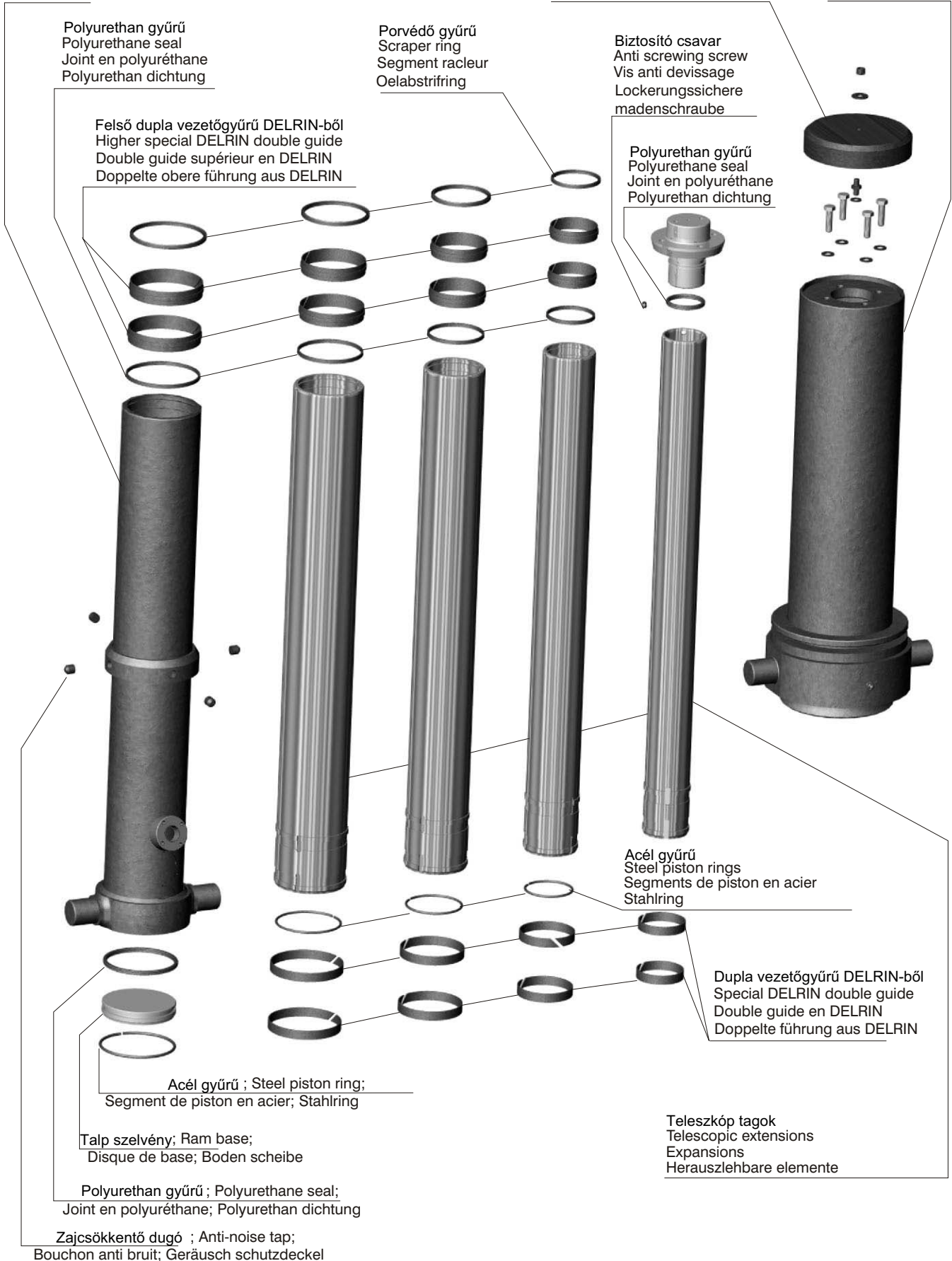
FRONT MUNKAHENGEREK
FRONT-END TIPPING GEARS
VERINS FRONTAUX
FRONTAL TELESKOPZYLINDER

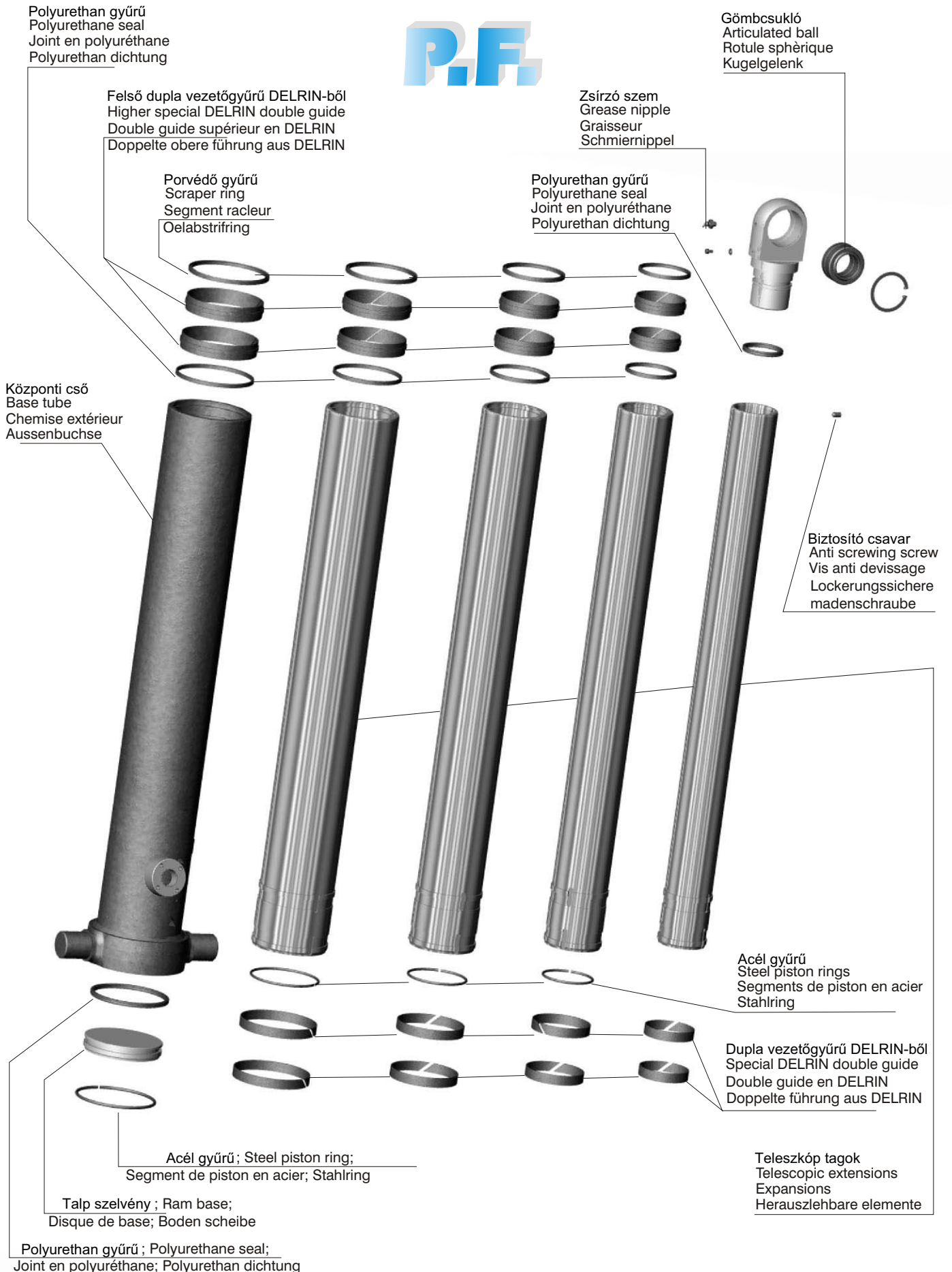
Központi cső
Base tube
Chemise extérieur
Aussenbuchse

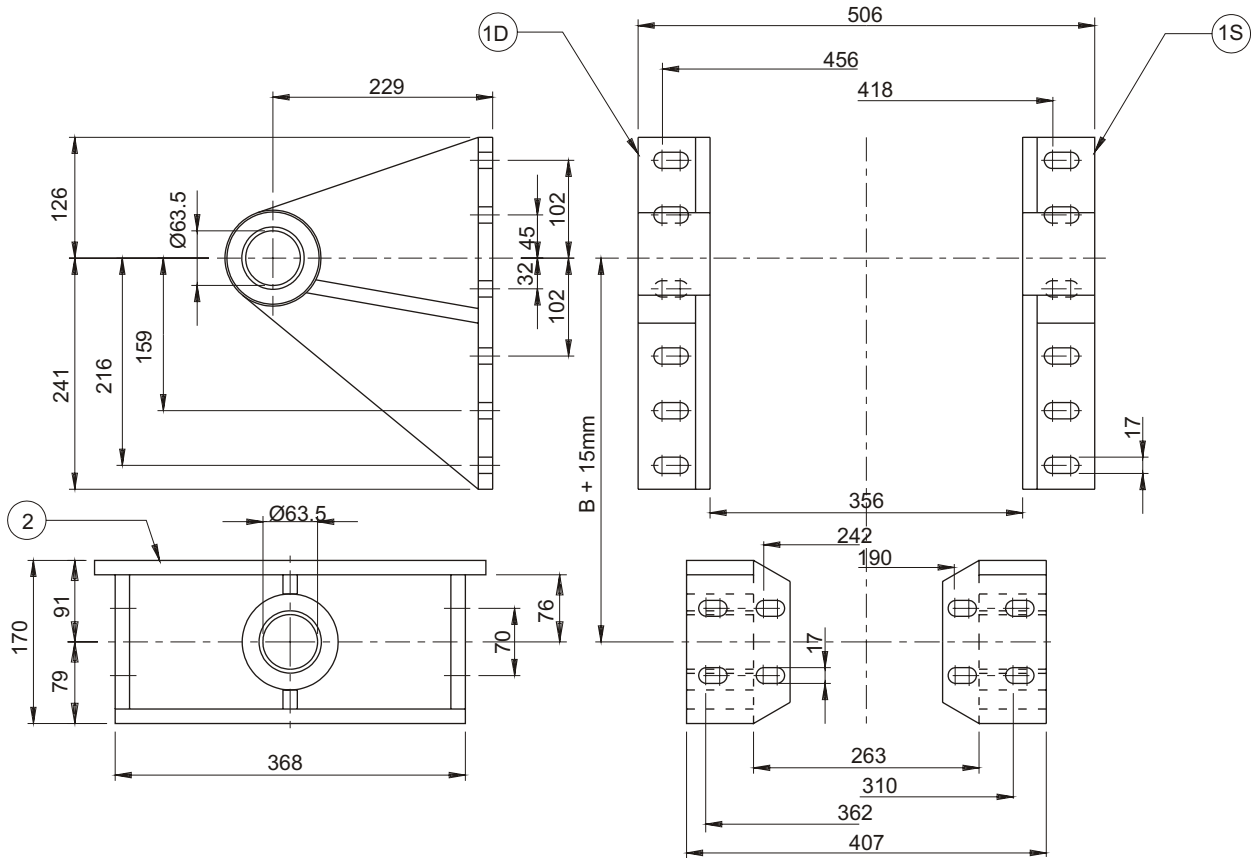
P.F.C.

Külső műanyag védősapka
Plastic hat protection
Chapeau plastique de protection
Plastik-schutzdeckel

Külső ház
Outer cover
Cloche
Glocke

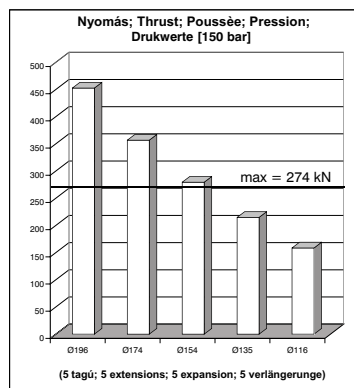
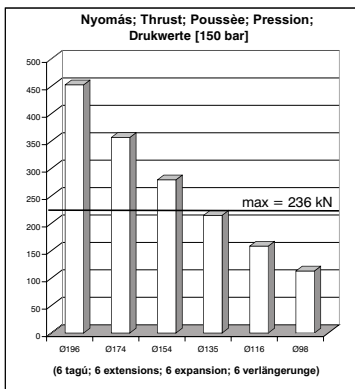






TARTÓ BRACKET PALIER HALTERUNG	KÓD CODE CODE BESTELL-Nr	TÖMEG MASS MASSE MASSE [kg]
1S	36 SSD 635	12
1D	36 SSS 635	12
2	36C INF 635	35

P.F.C. /196/

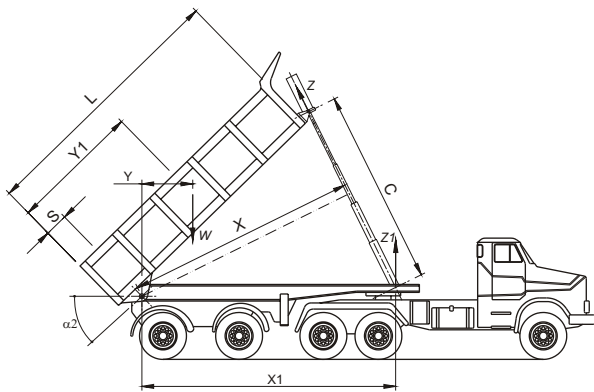


FRONT MUNKAHENGEREK
FRONT-END TIPPING GEARS
VÉRINS FRONTAUX
FRONTAL TELESKOPZYLINDER



KKT.

TAGOK EXTENSION EXPANSION ZYLINDERSTUF	ÁTMÉRŐ DIAMETER DIAMÈTRE DURCHMESS [mm]	ERŐ(150bar) THRUST(150bar) POUSSÉE(150bar) KRAFT(150bar) [kN]
1	174	357
2	154	279
3	135	215
4	116	159
5	98	113
6	79	74

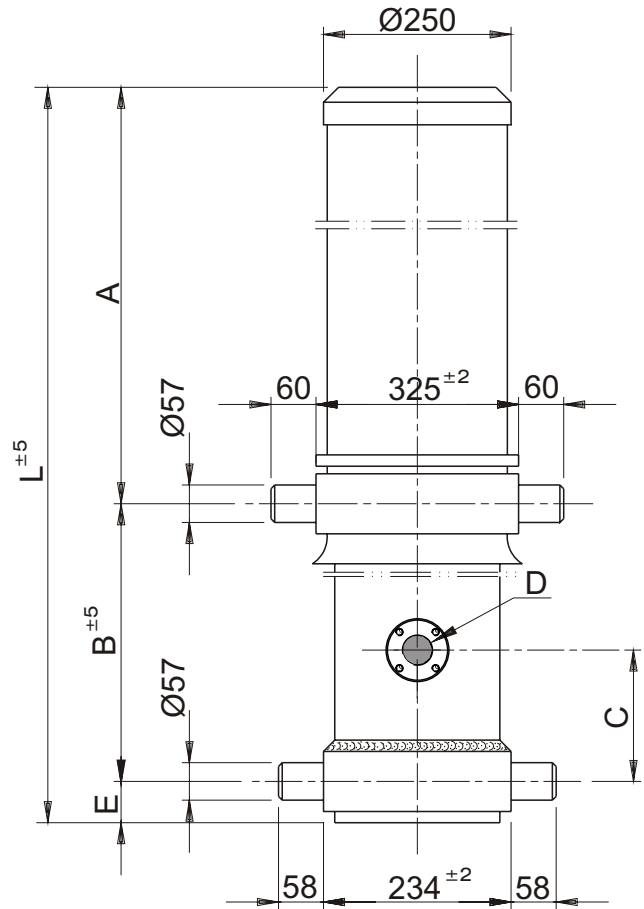


$$(\alpha = 0^\circ) \Rightarrow W = Z_1 \frac{X_1}{(Y_1 - S)}$$

$$(\alpha = \alpha_2) \Rightarrow W = Z \frac{X}{Y}$$

Z = Erő - Thrust - Poussée - Kraft

W = Feléptmény tömege - Mass tip-up - Masse rebatable - Kippmasse



KÓD CODE CODE BESTELL-Nr.	TYPE TYPE TYP	TAGOK SZÁMA EXTENSION N. N. DES RALLONGES STUFENZAHL	LÖKETHOSSZ - POWER STROKE COURSE DE TRAVAIL - GESAMTHUB								TÖMEG MASS MASSE	OLAJFÜLSZÉKLET OIL CONSUMPTION HUILE CONSOMMÉE OELVERBRAUCH	ÜZEMI NYOMÁS MAXIMUM PRESSURE PRESSION D'UTILISATION BETRIEBSDRUCK	MAX. ÜZEMI NYOMÁS MAXIMUM WORKING PRESSURE PRESSION D'UTILISATION MAXIMUM MAXIMUMBETRIEBSDRUCK	Billentési össztömeg [tonna] üzemi nyomásnál Total mass tip-up in [ton] at working pressure Masse totale rebatable en [tons] à la pression d'utilisation Gesamtkippmasse in [ton] zu betriebsdruck							
			I	II	III	IV	V	VI	VII	VIII					össz	L	A	B	C	D	E	
			[mm]								[kg]	[dm ³]	[bar]	[mm]					GAS BSP	[mm]		
HPFC 6667	P.F.C.6/174/6667	6	1093	1098	1107	1114	1124	1131			6667	365	94.8	150	185	35	1503	1111	347	190	1"	45
HPFC 9000	P.F.C.5/174/9000	5	1785	1790	1800	1810	1815				9000	461	143.6	125	150	35	2216	1831	340	190	1"	45
HPFC 8126	P.F.C.5/174/8126	5	1611	1616	1625	1632	1642				8126	454	130.1	125	150	35	2014	1629	340	190	1 1/4"	45
HPFC 7191	P.F.C.5/174/7191	5	1424	1429	1438	1445	1455				7191	422	115.1	150	185	42	1827	1397	340	190	1"	90
HPFC 6726	P.F.C.5/174/6726	5	1331	1336	1345	1352	1362				6726	389	107.6	150	185	42	1741	1356	340	190	1"	45
HPFC 6276	P.F.C.5/174/6276	5	1241	1246	1255	1262	1272				6276	378	100.4	150	185	42	1644	1259	340	190	1"	45
HPFC 5536	P.F.C.5/174/5536	5	1093	1098	1107	1114	1124				5536	348	88.5	150	185	42	1496	1111	340	190	1"	45
HPFC 7156	P.F.C.4/174/7156	4	1779	1784	1793	1800					7156	440	128.5	150	185	49	2209	1824	340	190	1"	45
HPFC 5364	P.F.C.4/174/5364	4	1331	1336	1345	1352					5364	359	96.3	150	185	49	1734	1349	340	190	1"	45
HPFC 5004	P.F.C.4/174/5004	4	1241	1246	1255	1262					5004	353	89.8	150	185	49	1637	1252	340	190	1"	45
HPFC 4412	P.F.C.4/174/4412	4	1093	1098	1107	1114					4412	327	79.2	150	185	49	1489	1104	340	190	1"	45

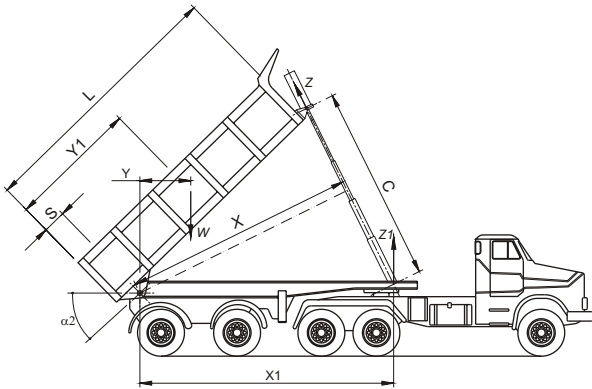
P.F.C. /174/

FRONT MUNKAHENGEREK
FRONT-END TIPPING GEARS
VÉRINS FRONTAUX
FRONTAL TELESKOPZYLINDER



KKT.

TAGOK EXTENSION EXPANSION ZYLINDERSTUF	ÁTMÉRŐ DIAMETER DIAMÈTRE DURCHMESS [mm]	ERŐ(150bar) THRUST(150bar) POUSSÉE(150bar) KRAFT(150bar) [kN]
1	154	279
2	135	215
3	116	159
4	98	113
5	79	74

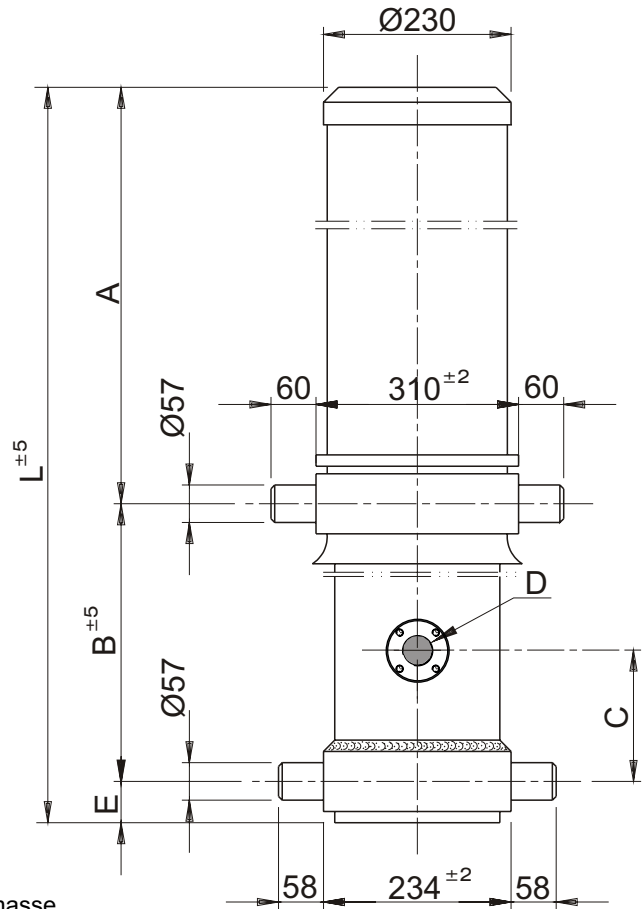


$$(\alpha = 0^\circ) \Rightarrow W = Z_1 \frac{X_1}{(Y_1 - S)}$$

$$(\alpha = \alpha_2) \Rightarrow W = Z \frac{X}{Y}$$

Z = Erő - Thrust - Poussée - Kraft

W = Felépítmény tömege - Mass tip-up - Masse rebatable - Kippmasse



KÓD CODE BESTELL-Nr	TÍPUS TYPE TYPE	TAGOK SZÁMA EXTENSION N. N. DES RALLONGES STUFENZAHL	LÖKETHOSSZ - POWER STROKE COURSE DE TRAVAIL - GESAMTHUB								TÖMEG MASS MASSE	OLAJFELHASZNÁLÁS OIL CONSUMPTION HUILE CONSOMMÉE ÖLVERBRAUCH	ÜZEMI NYOMÁS WORKING PRESSURE PRESSION D'UTILISATION BETRIEBSDRUCK	MAX. ÜZEMI NYOMÁS MAXIMUM WORKING PRESSURE PRESSION D'UTILISATION MAXIMUM MAXIMUMBETRIEBSDRUCK	Billentési össztömeg [tonna] üzemi nyomásnál Total mass tip-up in [ton] at working pressure Masse totale rebatable en [tons] à la pression d'utilisation Gesamtkippmasse in [ton] zu betriebsdruck					GAS BSP	[mm]
			I	II	III	IV	V	VI	VII	VIII					össz	L	A	B	C		
			[mm]								[kg]	[dm³]	[bar]	[mm]							
HPFC 9004	P.F.C.5/154/9004	5	1784	1793	1800	1810	1817			9004	334	108.9	125	150	25	2205	430	1740	190	1"	35
HPFC 8164	P.F.C.5/154/8164	5	1616	1625	1632	1642	1649			8164	372	98.7	125	150	25	2010	1489	486	190	1"	35
HPFC 7229	P.F.C.5/154/7229	5	1429	1438	1445	1455	1462			7229	343	87.4	150	185	30	1823	1302	486	190	1"(*)	35
HPFC 6764	P.F.C.5/154/6764	5	1336	1345	1352	1362	1369			6764	323	81.7	150	185	30	1737	1362	340	190	1"	35
HPFC 6313	P.F.C.5/154/6313	5	1245	1255	1262	1272	1279			6313	313	76.2	150	185	30	1640	1265	340	190	1"	35
HPFC 5574	P.F.C.5/154/5574	5	1098	1107	1114	1124	1131			5574	287	67.3	150	185	30	1492	1117	340	190	1"	35
HPFC 5314	P.F.C.5/154/5314	5	1046	1055	1062	1072	1079			5314	279	64.1	150	185	30	1440	1065	340	190	1"	35
HPFC 5395	P.F.C.4/154/5395	4	1336	1345	1352	1362				5395	320	74.1	150	185	36	1730	1355	340	190	1"	35
HPFC 5034	P.F.C.4/154/5034	4	1245	1255	1262	1272				5034	299	69.1	150	185	36	1633	1258	340	190	1"	35
HPFC 4443	P.F.C.4/154/4443	4	1098	1107	1114	1124				4443	261	61	150	185	36	1485	1110	340	190	1"	35

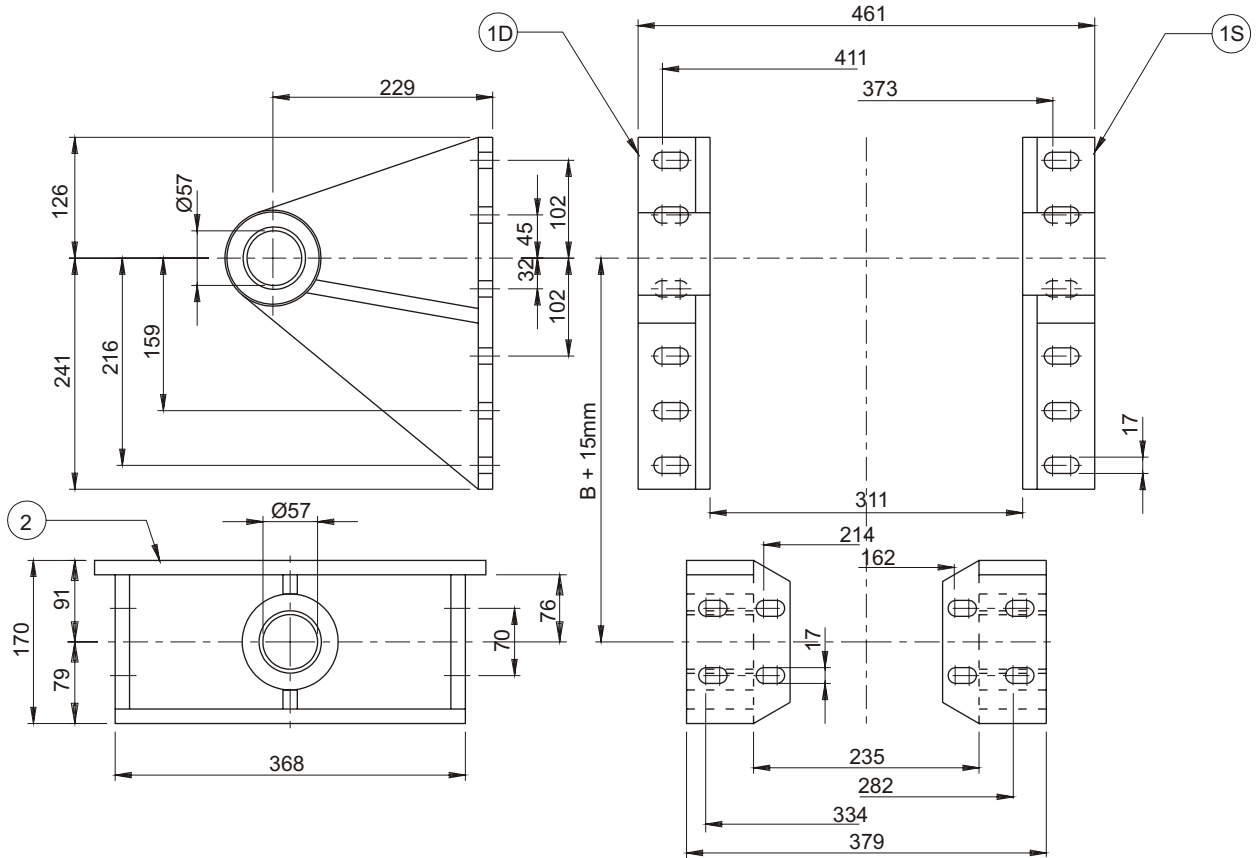
P.F.C. /154/

(*) Entrada de aceite rodada de 90 grados entorno al eje del cilindro con respecto al dibujo

(*) Oil entry rotated of 90° degree round axis of cylinder as regards the drawing

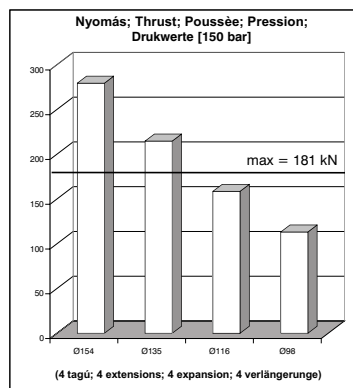
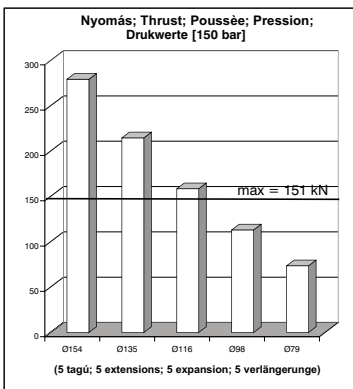
(*) Entrée huile tournée de 90 degrés à l'axe du vérin par rapport au dessin

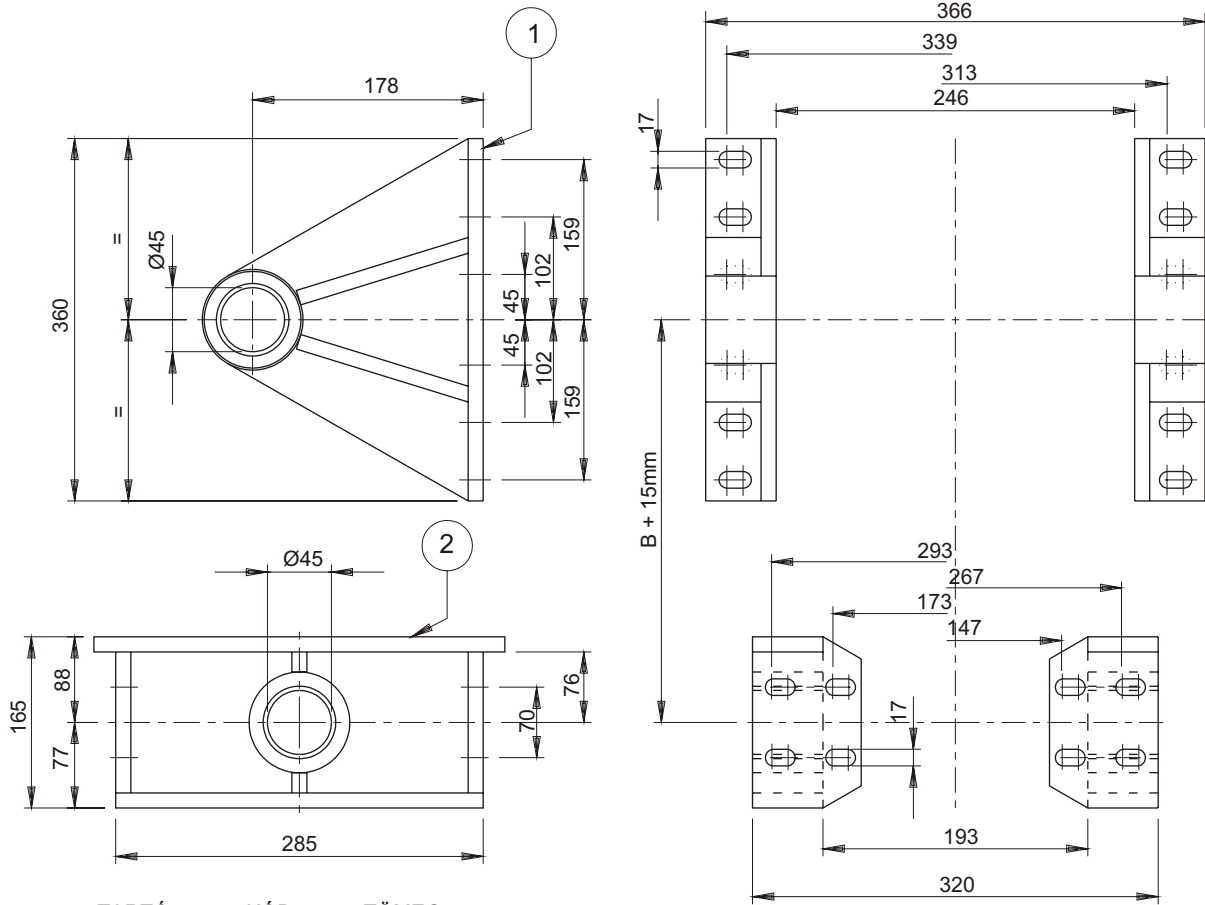
(*) Öleinlauf dreht sich von 90 Grad um die Achse des Zylinders bezug nehmend auf die Zeichnung



TARTÓ BRACKET PALIER HALTERUNG	KÓD CODE CODE BESTELL-Nr	TÖMEG MASS MASSE MASSE [kg]
1S	36 SSD 57	12
1D	36 SSS 57	12
2	36C INF 57	35

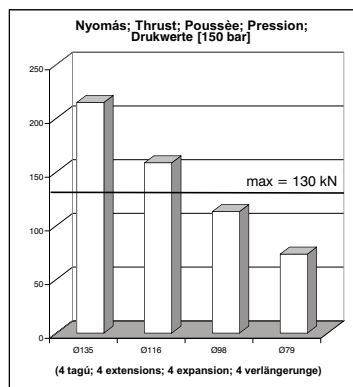
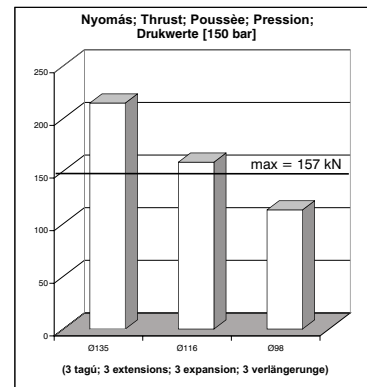
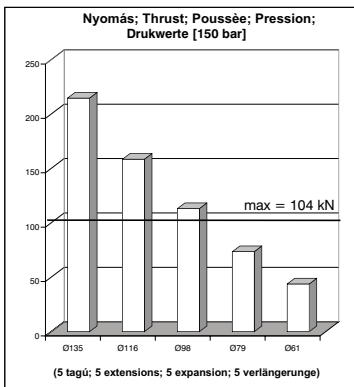
P.F.C. /154/

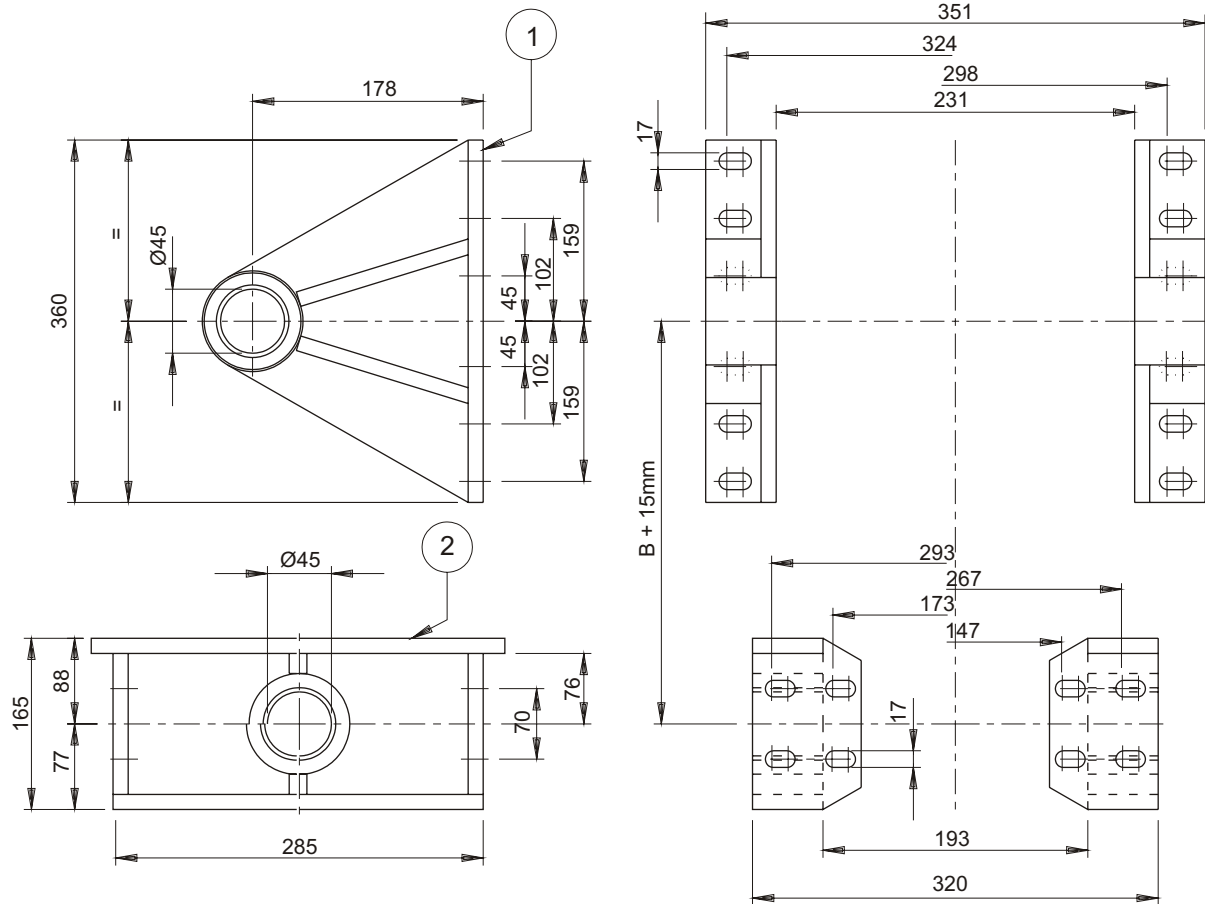




TARTÓ BRACKET PALIER HALTERUNG	KÓD CODE CODE BESTELL-Nr	TÖMEG MASS MASSE MASSE [kg]
1	36C SUP 45	18
2	36C INF 45	30

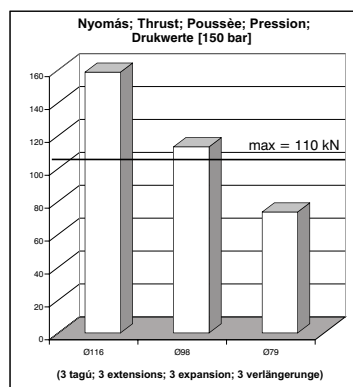
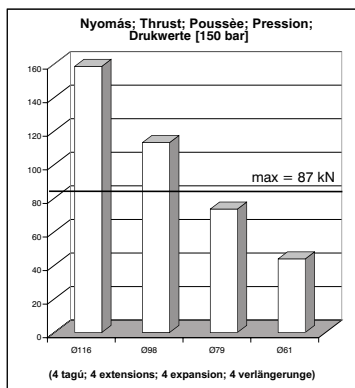
P.F.C. /135/





TARTÓ BRACKET PALIER HALTERUNG	KÓD CODE CODE BESTELL-Nr	TÖMEG MASS MASSE MASSE [kg]
1	36C SUP 45	18
2	36C INF 45	30

P.F.C. / 116/

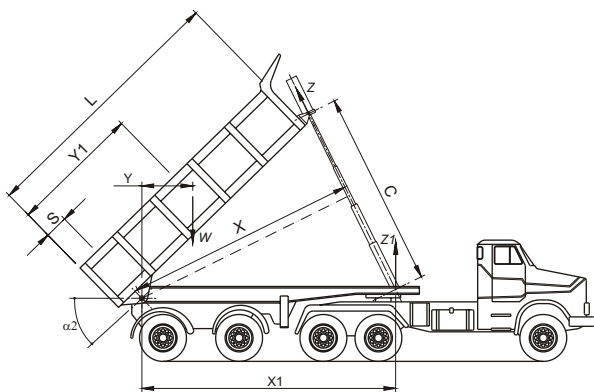


FRONT MUNKAHENGEREK
FRONT-END TIPPING GEARS
VÉRINS FRONTAUX
FRONTAL TELESKOPZYLINDER



KKT.

TAGOK EXTENSION EXPANSION ZYLINDERSTUF	ÁTMÉRŐ DIAMETER DIAMÈTRE DURCHMESS [mm]	ERŐ(150bar) THRUST(150bar) POUSSÉE(150bar) KRAFT(150bar) [kN]
1	196	453
2	174	357
3	154	279
4	135	215
5	116	159
6	98	113

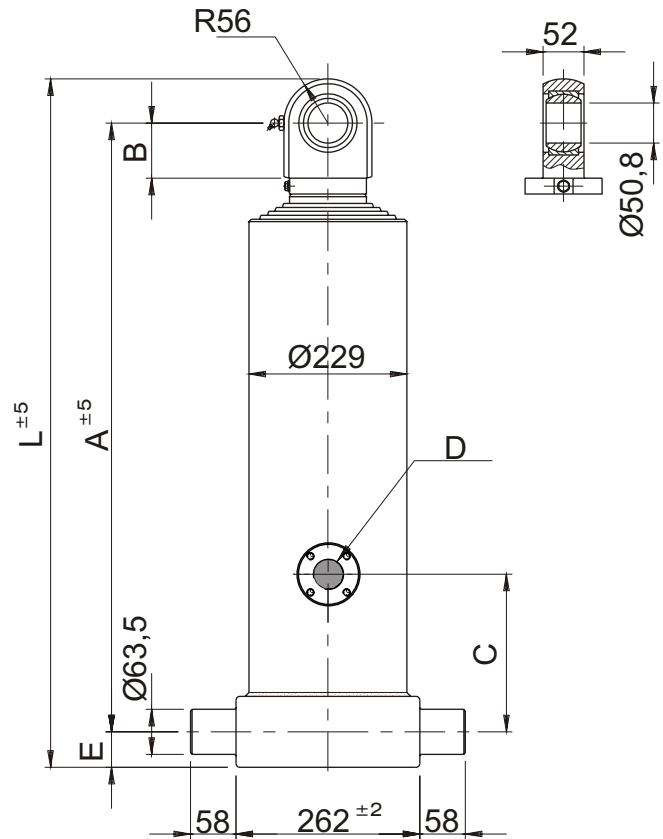


$$(\alpha = 0^\circ) \Rightarrow W = Z_1 \frac{X_1}{(Y_1 - S)}$$

$$(\alpha = \alpha_2) \Rightarrow W = Z \frac{X}{Y}$$

Z = Erő - Thrust - Poussée - Kraft

W = Feléptmény tömege - Mass tip-up - Masse rebatable - Kippmasse



KÓD CODE CODE BESTELL-Nr.	TÍPUS TYPE TYPE TYP	TAGOK SZÁMA EXTENSION N. N. DES RALLONGES STUFENZAHL	LÖKETHOSSZ - POWER STROKE COURSE DE TRAVAIL - GESAMTHUB								TÖMEG MASS MASSE	OLAJFÜLSZÉGLLET OIL CONSUMPTION HUILE CONSOMMÉE OELVERBRAUCH	ÜZEMI NYOMÁS WORKING PRESSURE PRESSION D'UTILISATION BETRIEBSDRUCK	MAX. ÜZEMI NYOMÁS MAXIMUM WORKING PRESSURE PRESSION D'UTILISATION MAXIMUM MAXIMUMBETRIEBSDRUCK	Billentési össztömeg [tonna] üzemi nyomásnál Total mass tip-up in [ton] at working pressure Masse totale rebatable en [tons] à la pression d'utilisation Gesamtkippmasse in [ton] zu betriebsdruck							
			I	II	III	IV	V	VI	VII	VIII					össz	L	A	B	C	D	E	
			[mm]								[kg]	[dm³]	[bar]	[mm]					GAS BSP	[mm]		
HPF 8048	P.F.6/196/8048	6	1322	1331	1336	1345	1352	1362			8048	380	149.6	125	150	40	1827	1716	70	210	1"	55
HPF 7508	P.F.6/196/7508	6	1232	1241	1246	1255	1262	1272			7508	369	139.5	150	185	48	1730	1614	70	210	1"	55
HPF 6620	P.F.6/196/6620	6	1084	1093	1098	1107	1114	1124			6620	338	122.9	150	185	48	1582	1471	70	210	1"	55
HPF 7036	P.F.5/196/7036	5	1392	1401	1406	1415	1422				7036	376	145.5	150	185	55	1890	1779	70	210	1"	55
HPF 6686	P.F.5/196/6686	5	1322	1331	1336	1345	1352				6686	366	138.2	150	185	55	1820	1709	70	210	1"	55
HPF 6236	P.F.5/196/6236	5	1232	1241	1246	1255	1262				6236	352	128.9	150	185	55	1723	1612	70	210	1"	55
HPF 6134	P.F.5/196/6134	5	1222	1226	1226	1230	1230				6134	340	127	150	185	55	1666	1555	70	210	1 1/4"	55
HPF 5496	P.F.5/196/5496	5	1084	1093	1098	1107	1114				5496	320	113.6	150	185	55	1575	1464	70	210	1"	55

P.F. /196/

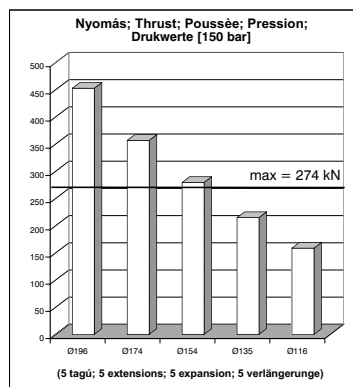
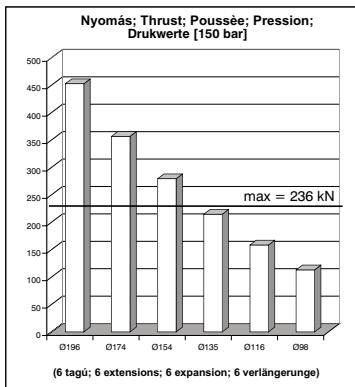
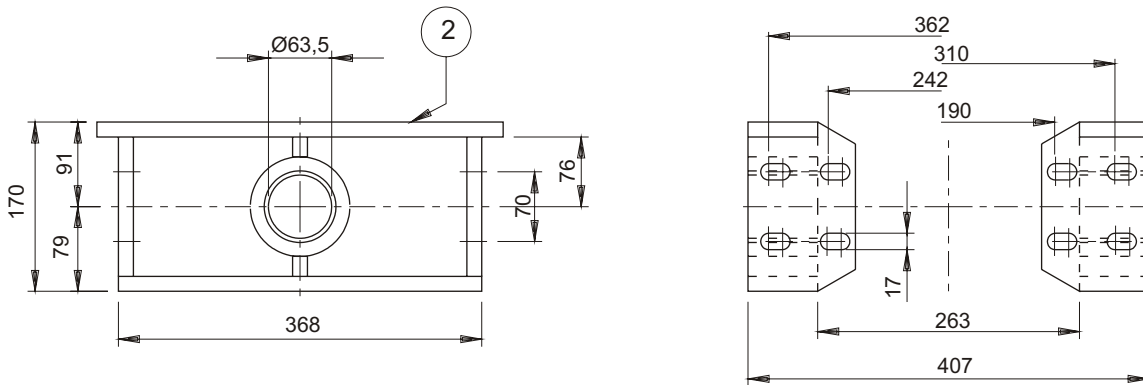
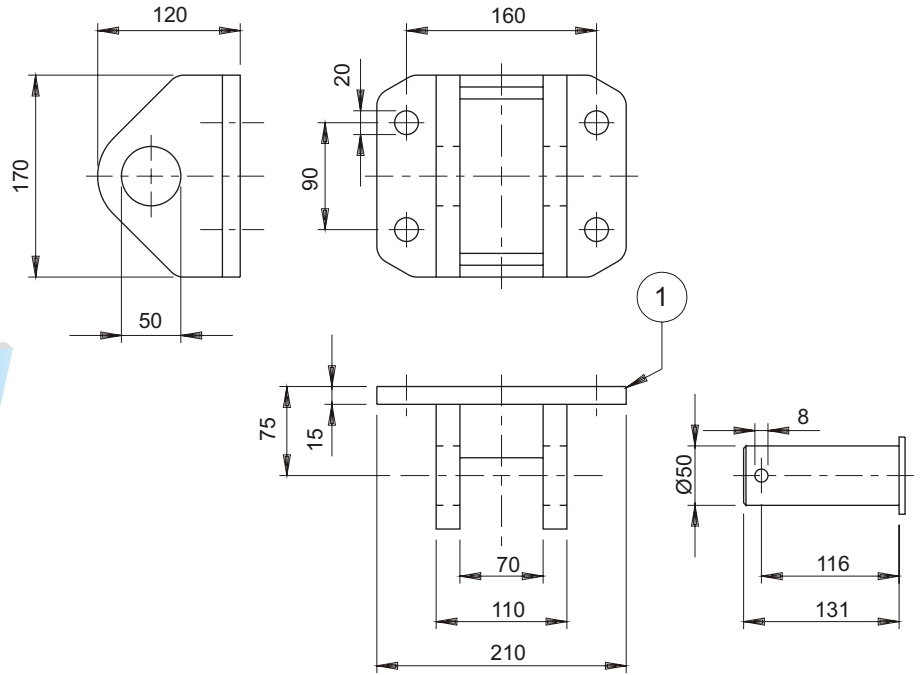
P.F. /196/

TARTÓ
BRACKET
PALIER
HALTERUNG

KÓD
CODE
CODE
BESTELL-Nr

TÖMEG
MASS
MASSE
MASSE

		[kg]
1	36 CER 6236	11
2	36C INF 635	35

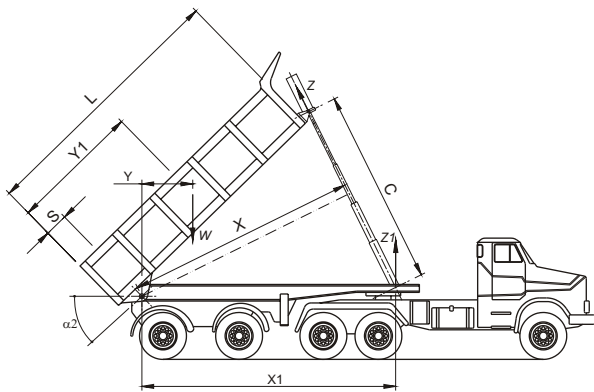


FRONT MUNKAHENGEREK
FRONT-END TIPPING GEARS
VÉRINS FRONTAUX
FRONTAL TELESKOPZYLINDER



KKT.

TAGOK EXTENSION EXPANSION ZYLINDERSTUF	ÁTMÉRŐ DIAMETER DIAMÈTRE DURCHMESS [mm]	ERŐ(150bar) THRUST(150bar) POUSSÉE(150bar) KRAFT(150bar) [kN]
1	174	357
2	154	279
3	135	215
4	116	159
5	98	113
6	79	74

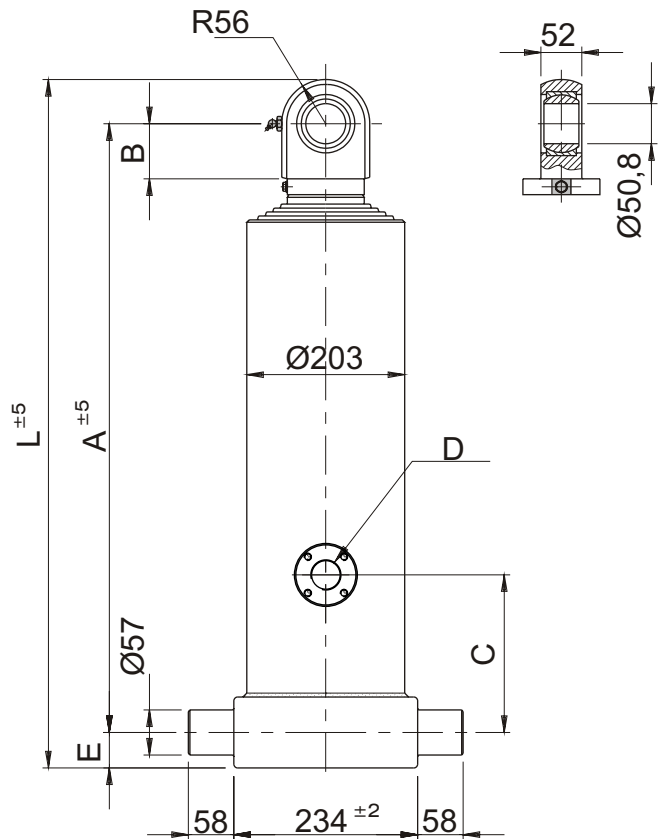


$$(\alpha = 0^\circ) \Rightarrow W = Z_1 \frac{X_1}{(Y_1 - S)}$$

$$(\alpha = \alpha_2) \Rightarrow W = Z \frac{X}{Y}$$

Z = Erő - Thrust - Poussée - Kraft

W = Feléptmény tömege - Mass tip-up - Masse rebatable - Kippmasse



KÓD CODE CODE BESTELL-Nr.	TÍPUS TYPE TYPE TYP	TAGOK SZÁMA EXTENSION N. N. DES RALLONGES STUFENZAHL	LÖKETHOSSZ - POWER STROKE COURSE DE TRAVAIL - GESAMTHUB								TÖMEG MASS MASSE	OLAJSZÜKSÉGLLET OIL CONSUMPTION HUILE CONSOMMÉE OELVERBRAUCH	ÜZEMI NYOMÁS WORKING PRESSURE PRESSION D'UTILISATION BETRIEBSDRUCK	MAX. ÜZEMI NYOMÁS MAXIMUM WORKING PRESSURE PRESSION D'UTILISATION MAXIMUM MAXIMUMBETRIEBSDRUCK	Billentési össztömeg [tonna] üzemi nyomásnál Total mass tip-up in [ton] at working pressure Masse totale rebatable en [tons] à la pression d'utilisation Gesamtkippmasse in [ton] zu betriebsdruck					GAS BSP	[mm]	
			I	II	III	IV	V	VI	VII	VIII					össz	L	A	B	C			D
			[mm]								[kg]	[dm³]	[bar]	[mm]								
HPF 6667	P.F.6/174/6667	6	1093	1098	1107	1114	1124	1131			6667	268	94.8	150	185	35	1574	1473	70	200	1"	45
HPF 9000	P.F.5/174/9000	5	1785	1790	1800	1810	1815			9000	363	143.6	125	150	35	2287	2186	70	200	1"	45	
HPF 8126	P.F.5/174/8126	5	1611	1616	1625	1632	1642			8126	346	130.1	125	150	35	2085	1987	70	200	1"	45	
HPF 7191	P.F.5/174/7191	5	1424	1429	1438	1445	1455			7191	316	115.1	150	185	42	1923	1777	70	200	1 1/4"	90	
HPF 6726	P.F.5/174/6726	5	1331	1336	1345	1352	1362			6726	292	107.6	150	185	42	1812	1711	70	200	1"	45	
HPF 6276	P.F.5/174/6276	5	1241	1246	1255	1262	1272			6276	281	100.4	150	185	42	1715	1614	70	200	1"	45	
HPF 6145	P.F.5/174/6145	5	1226	1226	1230	1230	1233			6145	269	98.5	150	185	42	1648	1502	70	200	1 1/4"	90	
HPF 5697	P.F.5/174/5697	5	1122	1131	1140	1147	1157			5697	263	91.2	150	185	42	1664	1563	70	200	1 1/4"	45	
HPF 5536	P.F.5/174/5536	5	1093	1098	1107	1114	1124			5536	257	88.5	150	185	42	1567	1466	70	200	1"	45	
HPF 5445	P.F.5/174/5445	5	1086	1086	1090	1090	1093			5445	245	87.3	150	185	42	1537	1391	70	200	1 1/4"	90	
HPF 7156	P.F.4/174/7156	4	1779	1784	1793	1800				7156	346	128.5	150	185	49	2280	2179	70	200	1"	45	
HPF 5364	P.F.4/174/5364	4	1331	1336	1345	1352				5364	281	96.3	150	185	49	1805	1704	70	200	1"	45	
HPF 5004	P.F.4/174/5004	4	1241	1246	1255	1262				5004	262	89.8	150	185	49	1708	1607	70	200	1"	45	
HPF 4412	P.F.4/174/4412	4	1093	1098	1107	1114				4412	238	79.2	150	185	49	1560	1459	70	200	1"	45	

P.F. /174/

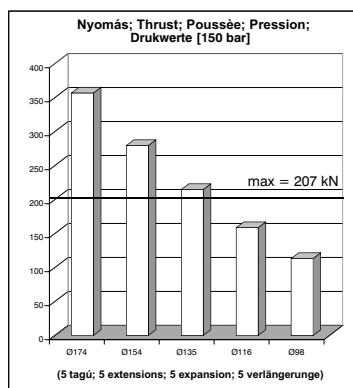
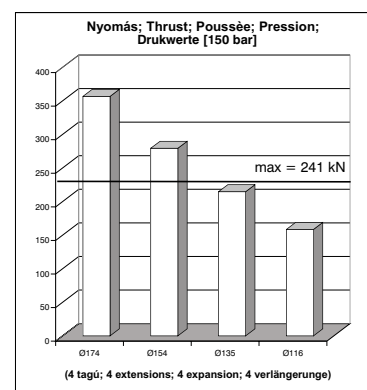
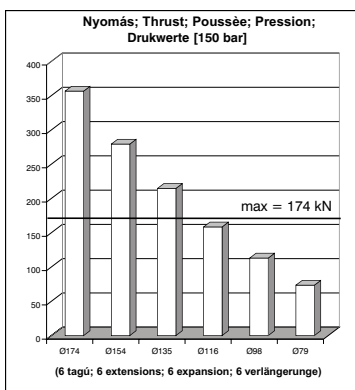
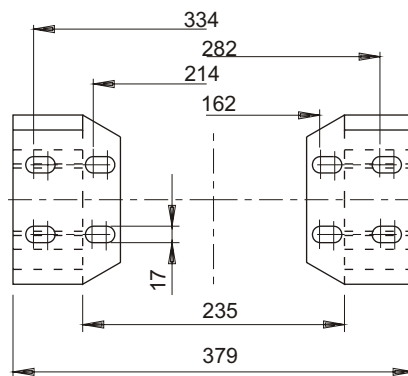
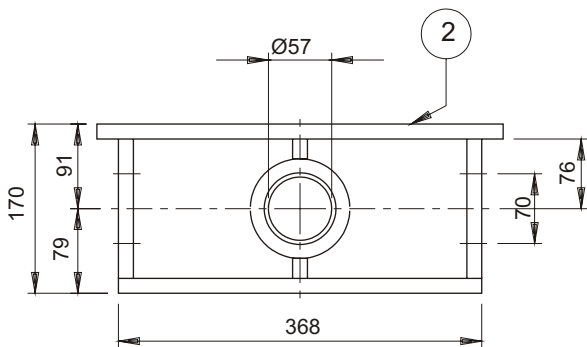
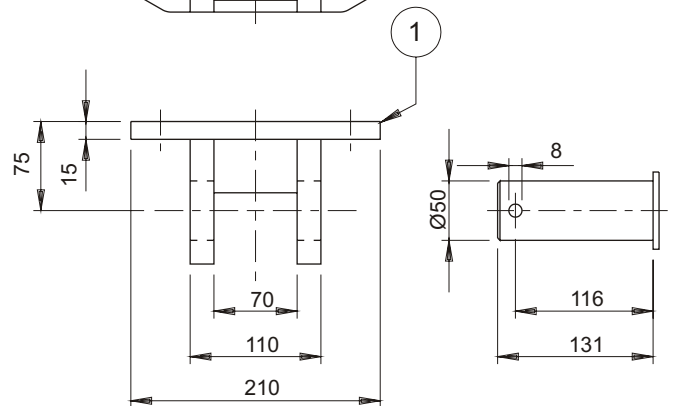
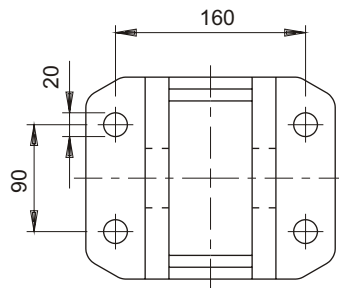
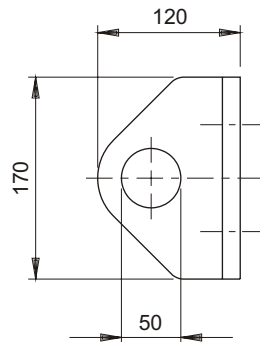
P.F. /174/

TARTÓ
BRACKET
PALIER
HALTERUNG

KÓD
CODE
CODE
BESTELL-Nr

TÖMEG
MASS
MASSE
MASSE

		[kg]
1	36 CER 6236	11
2	36C INF 57	35

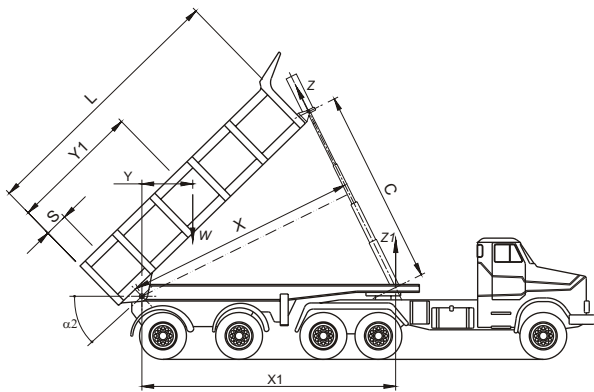


FRONT MUNKAHENGEREK
FRONT-END TIPPING GEARS
VÉRINS FRONTAUX
FRONTAL TELESKOPZYLINDER



KKT.

TAGOK EXTENSION EXPANSION ZYLINDERSTUF	ÁTMÉRŐ DIAMETER DIAMÈTRE DURCHMESS [mm]	ERŐ(150bar) THRUST(150bar) POUSSÉE(150bar) KRAFT(150bar) [kN]
1	154	279
2	135	215
3	116	159
4	98	113
5	79	74

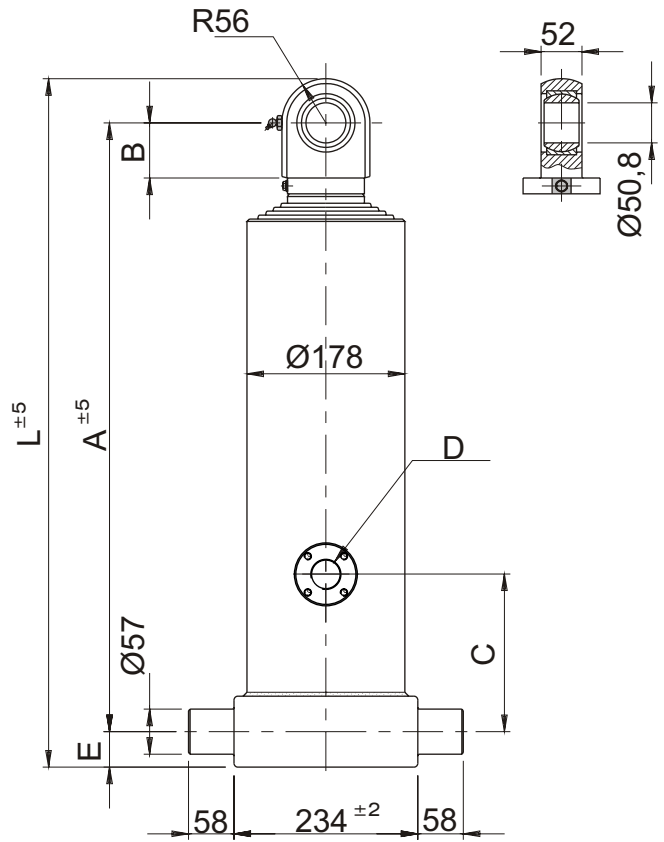


$$(\alpha = 0^\circ) \Rightarrow W = Z_1 \frac{X_1}{(Y_1 - S)}$$

$$(\alpha = \alpha_2) \Rightarrow W = Z \frac{X}{Y}$$

Z = Erő - Thrust - Poussée - Kraft

W = Feléptmény tömege - Mass tip-up - Masse rebatable - Kippmasse



KÓD CODE CODE BESTELL-Nr.	TÍPUS TYPE TYPE TYP	TAGOK SZÁMA EXTENSION N. N. DES RALLONGES STUFENZAHL	LÖKETHOSSZ - POWER STROKE COURSE DE TRAVAIL - GESAMTHUB								TÖMEG MASS MASSE	OLAJSZÜKSÉGLET OIL CONSUMPTION HUILE CONSOMMÉE OELVERBRAUCH	ÜZEMI NYOMÁS WORKING PRESSURE PRESSION D'UTILISATION BETRIEBSDRUCK	MAX. ÜZEMI NYOMÁS MAXIMUM WORKING PRESSURE PRESSION D'UTILISATION MAXIMUM MAXIMUMBETRIEBSDRUCK	Billentési össztömeg [tonna] üzemi nyomásnál Total mass tip-up in [ton] at working pressure Masse totale rebatable en [tons] à la pression d'utilisation Gesamtkippmasse in [ton] zu betriebsdruck							
			I	II	III	IV	V	VI	VII	VIII					ÖSSZ	L	A	B	C	D	E	
			[mm]								[kg]	[dm ³]	[bar]	[mm]					GAS BSP	[mm]		
HPF 9004	P.F.5/154/9004	5	1784	1793	1800	1810	1817				9004	299	108.9	125	150	25	2277	2186	70	190	1"	35
HPF 8164	P.F.5/154/8164	5	1616	1625	1632	1642	1649				8164	284	98.7	125	150	25	2082	1991	70	190	1"	35
HPF 7229	P.F.5/154/7229	5	1429	1438	1445	1455	1462				7229	248	87.4	150	185	30	1895	1804	70	190	1"	35
HPF 6764	P.F.5/154/6764	5	1336	1345	1352	1362	1369				6764	230	81.7	150	185	30	1809	1718	70	190	1"	35
HPF 6313	P.F.5/154/6313	5	1245	1255	1262	1272	1279				6313	219	76.2	150	185	30	1722	1621	70	190	1"	35
HPF 5574	P.F.5/154/5574	5	1098	1107	1114	1124	1131				5574	197	67.3	150	185	30	1564	1473	70	190	1"	35
HPF 5314	P.F.5/154/5314	5	1046	1055	1062	1072	1079				5314	191	64.1	150	185	30	1512	1421	70	190	1"	35
HPF 5395	P.F.4/154/5395	4	1336	1345	1352	1362					5395	212	74.1	150	185	36	1802	1711	70	190	1"	35
HPF 5034	P.F.4/154/5034	4	1245	1255	1262	1272					5034	205	69.1	150	185	36	1705	1614	70	190	1"	35
HPF 4443	P.F.4/154/4443	4	1098	1107	1114	1124					4443	187	61	150	185	36	1557	1466	70	190	1"	35

P.F. /154/

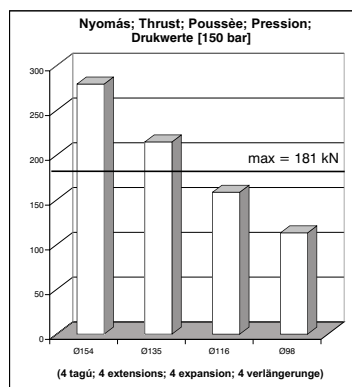
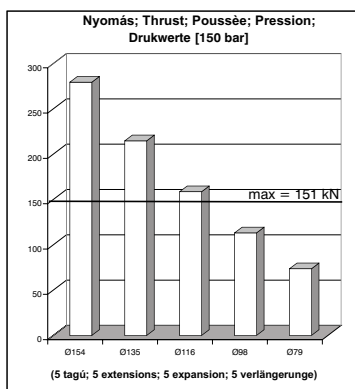
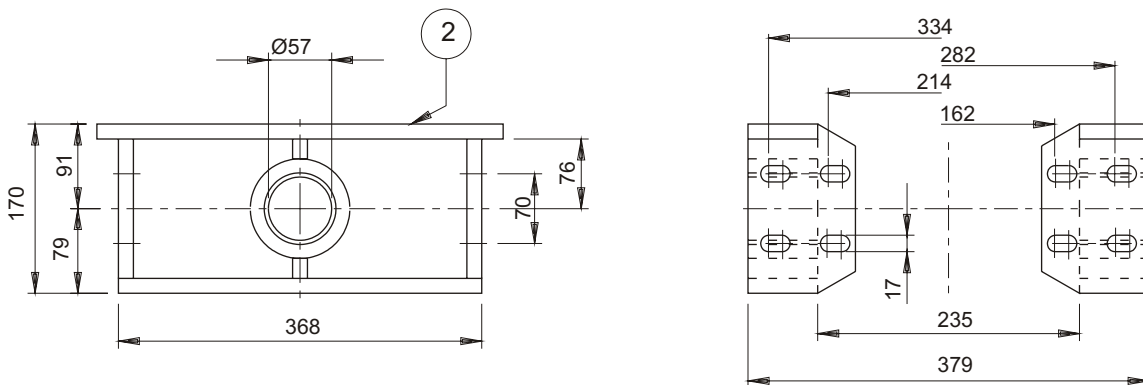
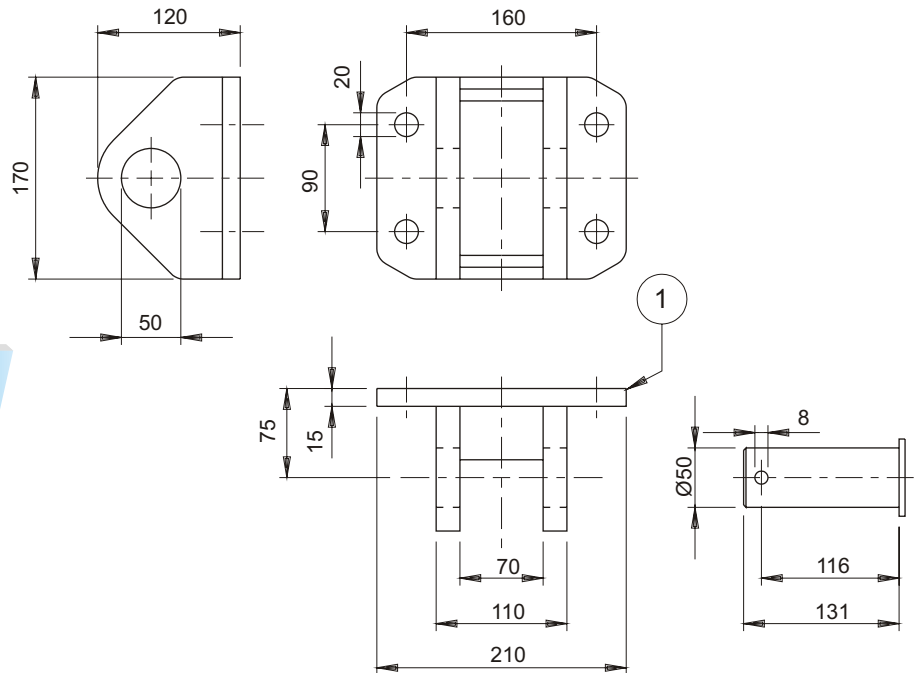
P.F. /154/

TARTÓ
BRACKET
PALIER
HALTERUNG

KÓD
CODE
CODE
BESTELL-Nr

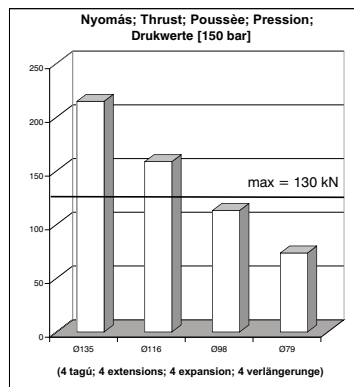
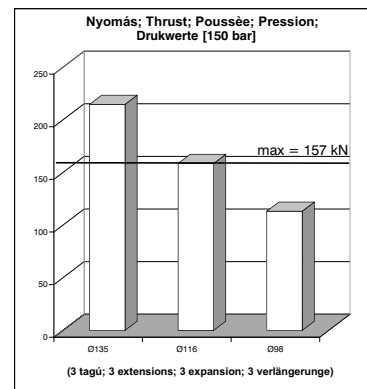
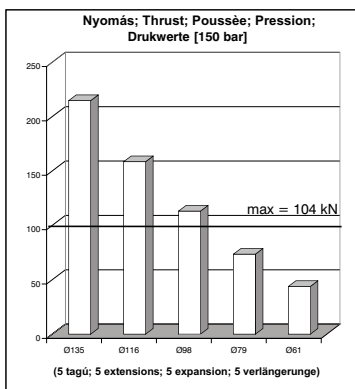
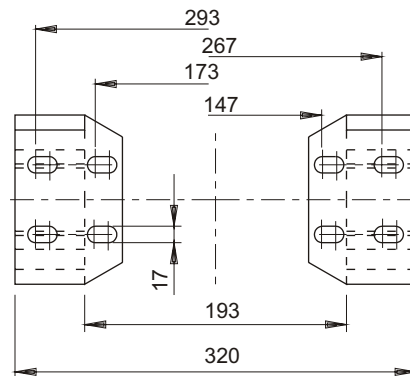
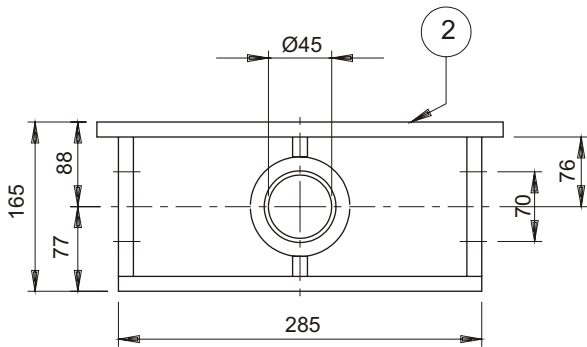
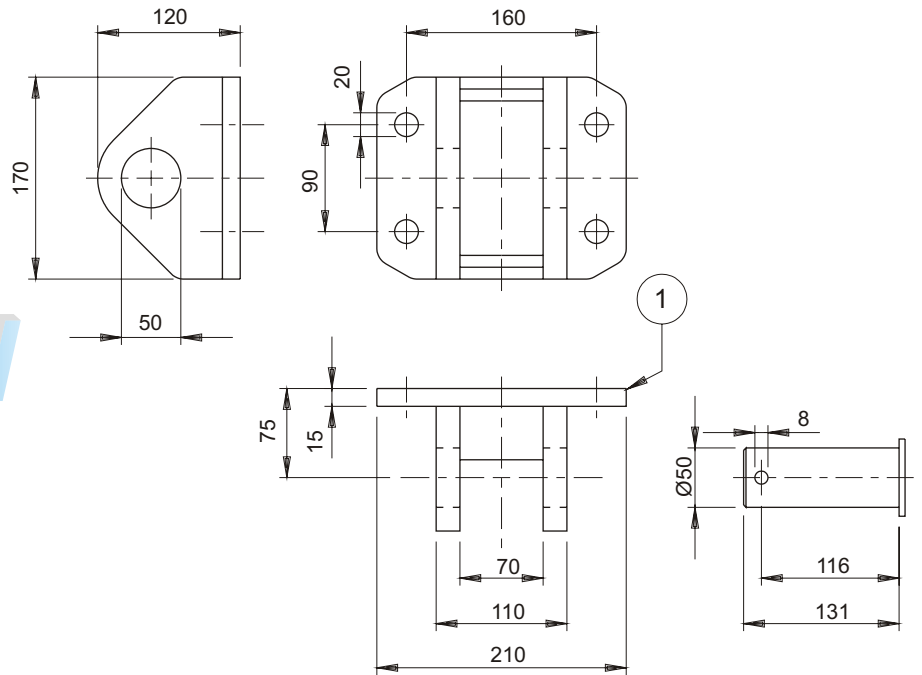
TÖMEG
MASS
MASSE
MASSE

		[kg]
1	36 CER 6236	11
2	36C INF 57	35

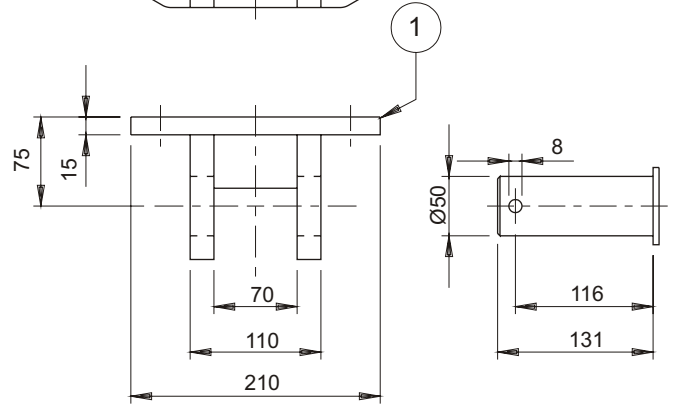
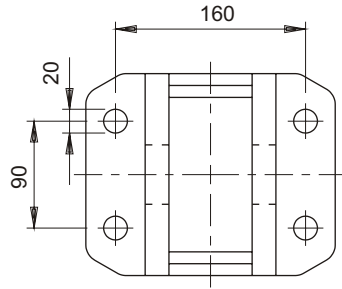
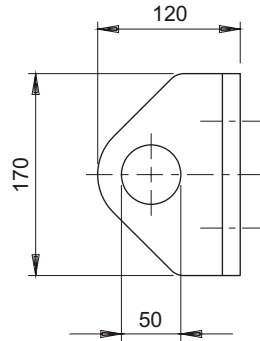


P.F. /135/

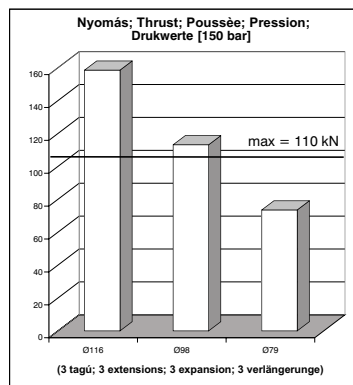
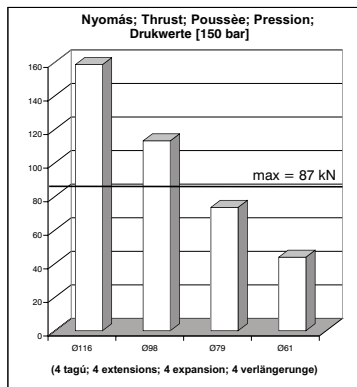
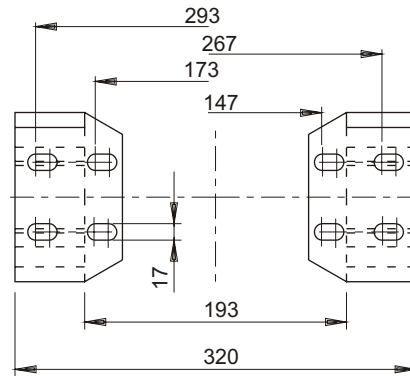
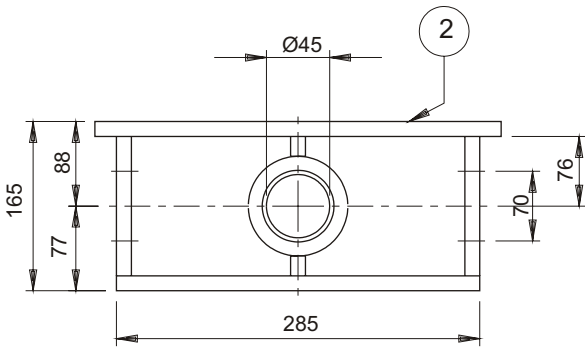
TARTÓ BRACKET PALIER HALTERUNG	KÓD CODE CODE BESTELL-Nr	TÖMEG MASS MASSE MASSE [kg]
1	36 CER 6236	11
2	36C INF 45	30

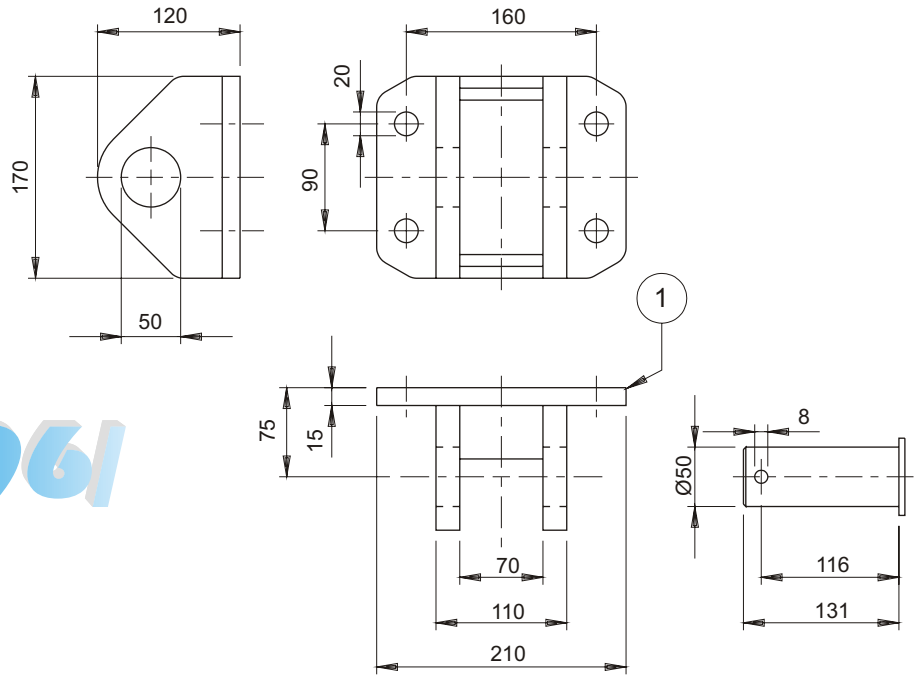


P.F. /116/



TARTÓ BRACKET PALIER HALTERUNG	KÓD CODE CODE BESTELL-Nr	TÖMEG MASS MASSE MASSE [kg]
1	36 CER 6236	11
2	36C INF 45	30

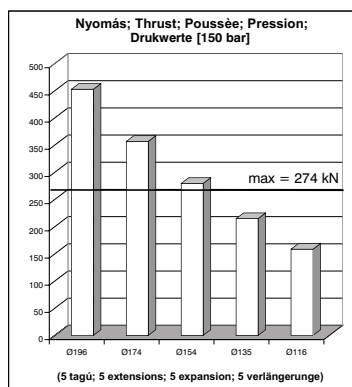


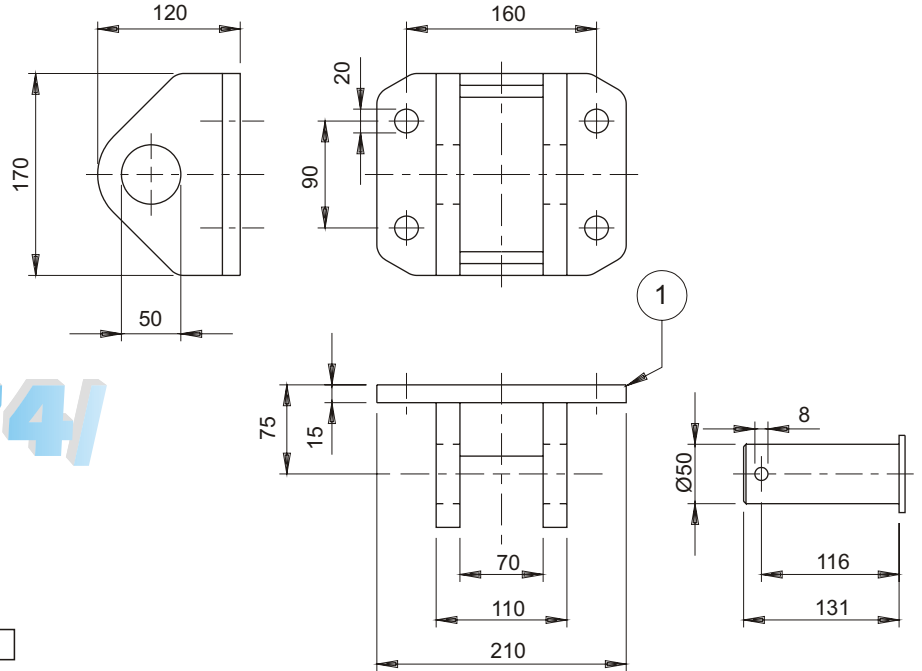


P.F.B. / 1961

TARTÓ BRACKET PALIER HALTERUNG	KÓD CODE CODE BESTELL-Nr	TÖMEG MASS MASSE MASSE [kg]
1	36 CER 6236	11

ALSÓ TARTÓ NEM RENDELHETŐ
LOWER SUPPORT IS NOT SUPPLIED
LE PALIER INFÉRIEUR N'EST PAS FOURNI
DIE UNTER TRAEGER WERDEN NICHT GELIEFERT

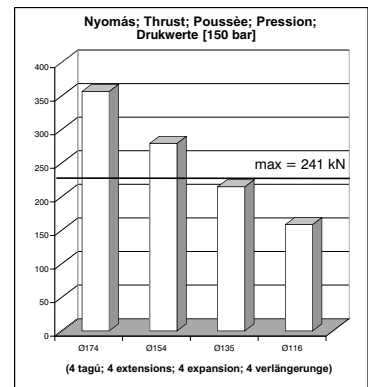


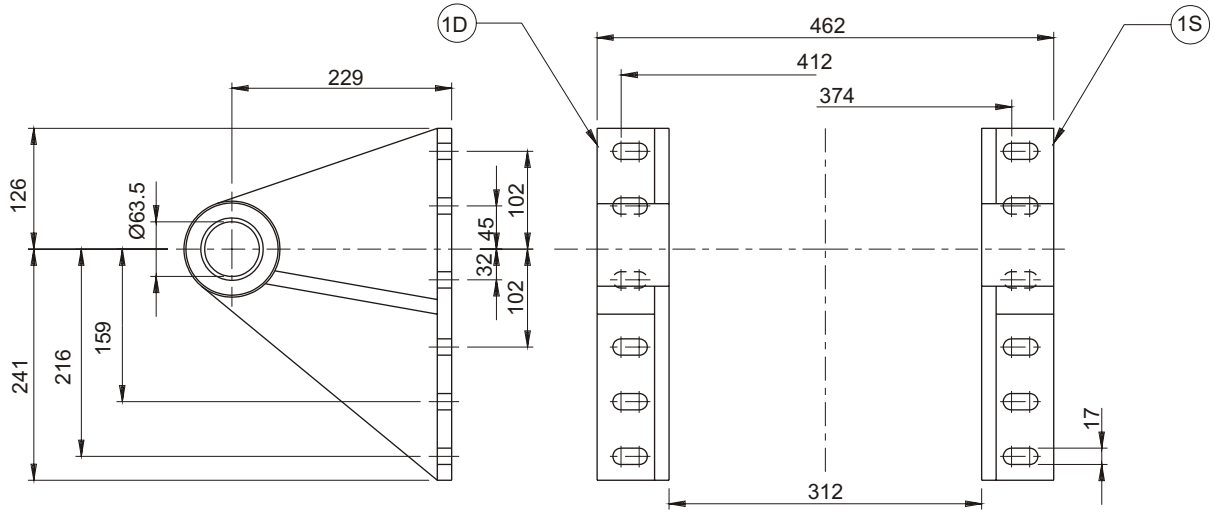


P.F.B. /174/

TARTÓ BRACKET PALIER HALTERUNG	KÓD CODE CODE BESTELL-Nr	TÖMEG MASS MASSE MASSE [kg]
1	36 CER 6236	11

ALSÓ TARTÓ NEM RENDELHETŐ
LOWER SUPPORT IS NOT SUPPLIED
LE PALIER INFÉRIEUR N'EST PAS FOURNI
DIE UNTER TRAEGER WERDEN NICHT GELIEFERT

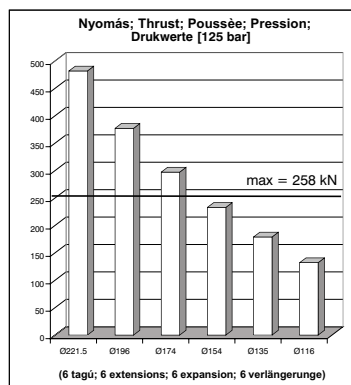
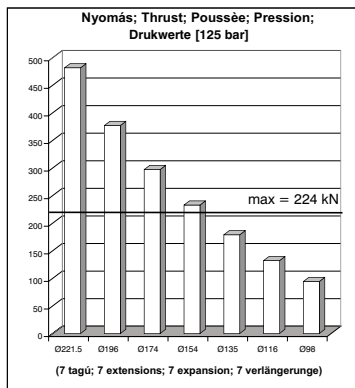


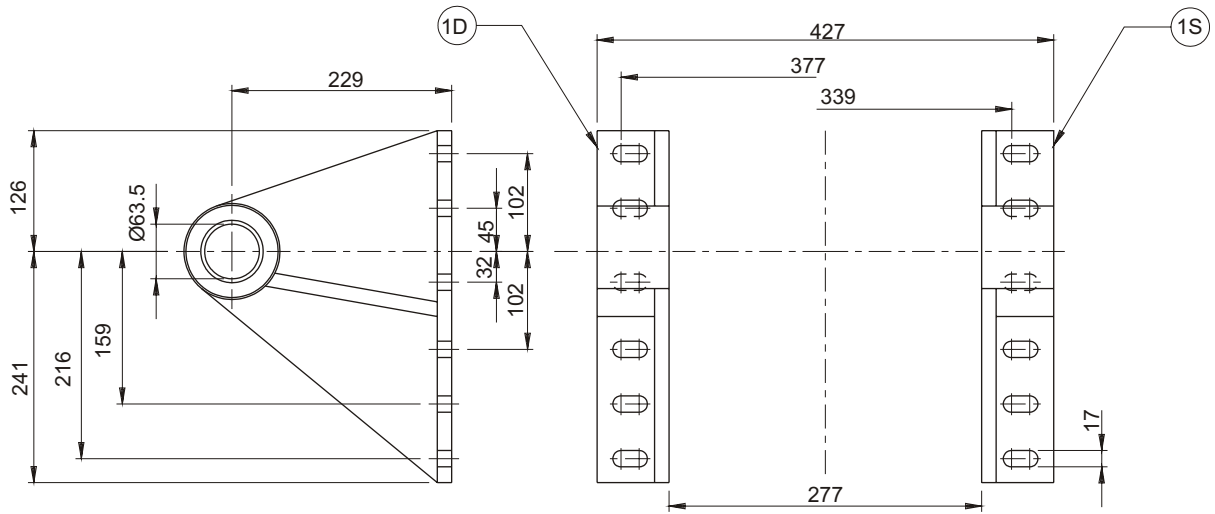


ALSÓ TARTÓ NEM RENDELHETŐ
LOWER SUPPORT IS NOT SUPPLIED
LE PALIER INFÉRIEUR N'EST PAS FOURNI
DIE UNTER TRÄGER WERDEN NICHT GELIEFERT

TARTÓ BRACKET PALIER HALTERUNG	KÓD CODE CODE BESTELL-Nr	TÖMEG MASS MASSE MASSE [kg]
1S	36 SSD 635	12
1D	36 SSS 635	12

P.F.R. /221/

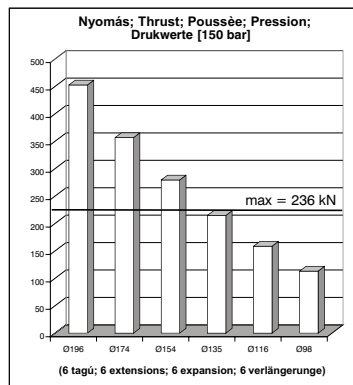
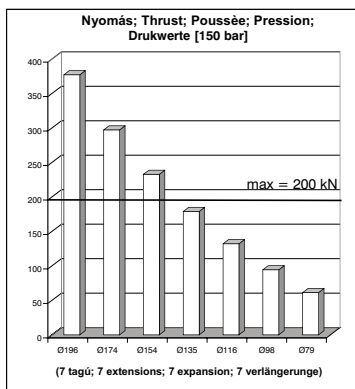


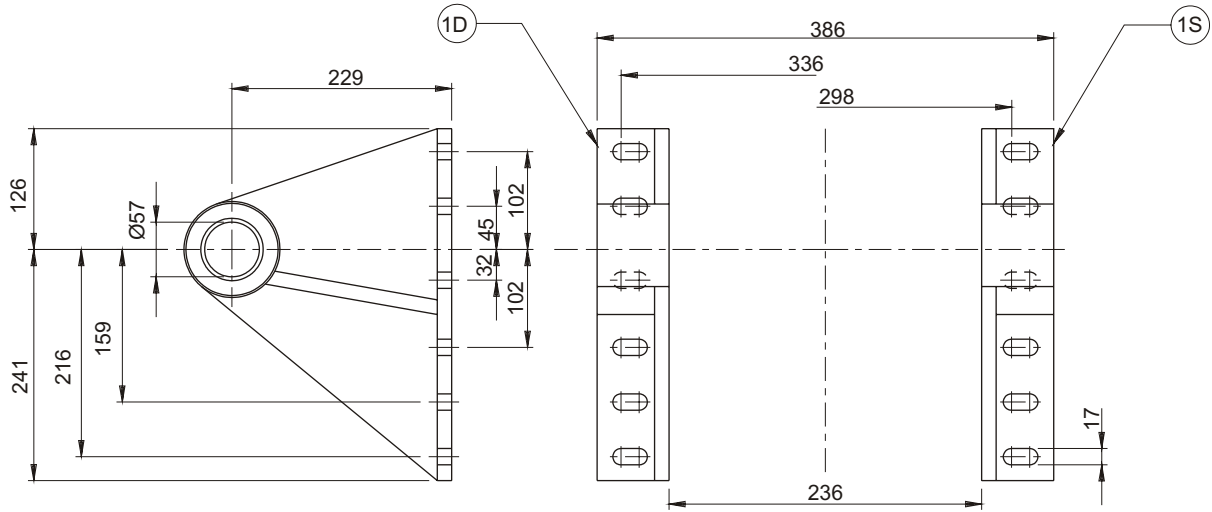


ALSÓ TARTÓ NEM RENDELHETŐ
LOWER SUPPORT IS NOT SUPPLIED
LE PALIER INFÉRIEUR N'EST PAS FOURNI
DIE UNTER TRAEGER WERDEN NICHT GELIEFERT

TARTÓ BRACKET PALIER HALTERUNG	KÓD CODE CODE BESTELL-Nr	TÖMEG MASS MASSE MASSE
		[kg]
1S	36 SSD 635	12
1D	36 SSS 635	12

P.F.R. / 196/

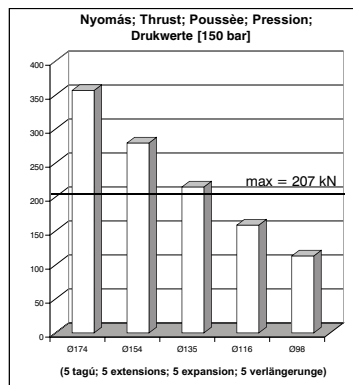
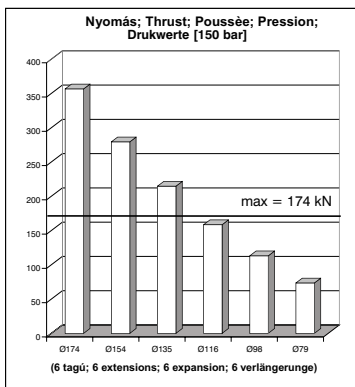


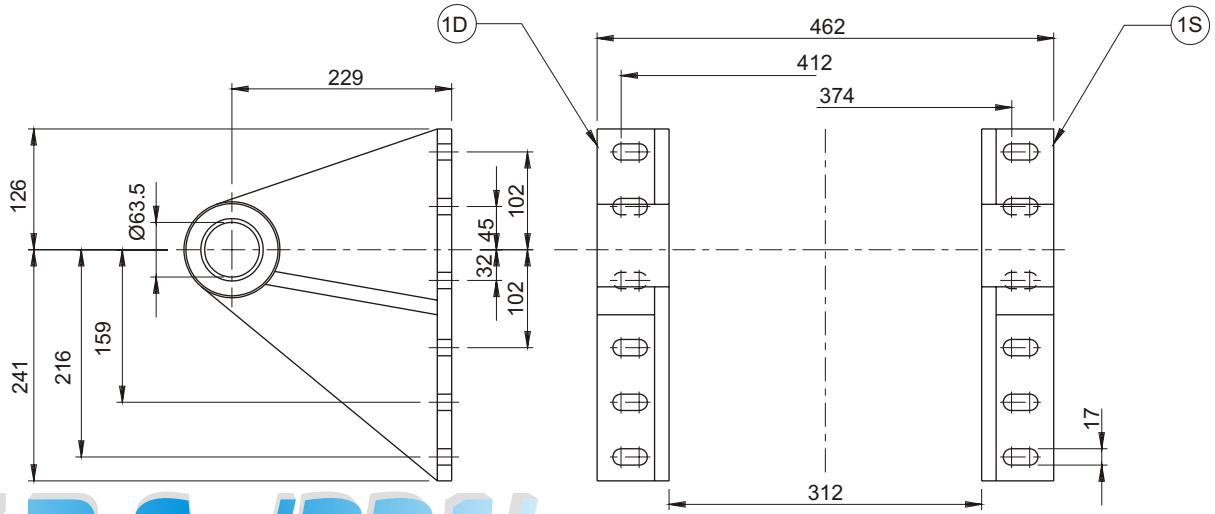


ALSÓ TARTÓ NEM RENDELHETŐ
LOWER SUPPORT IS NOT SUPPLIED
LE PALIER INFÉRIEUR N'EST PAS FOURNI
DIE UNTER TRAEGER WERDEN NICHT GELIEFERT

TARTÓ BRACKET PALIER HALTERUNG	KÓD CODE CODE BESTELL-Nr	TÖMEG MASS MASSE MASSE
		[kg]
1S	36 SSD 57	12
1D	36 SSS 57	12

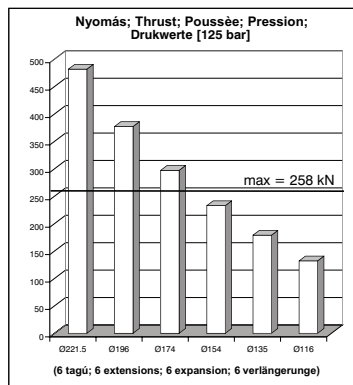
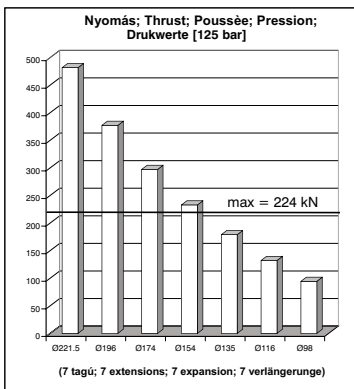
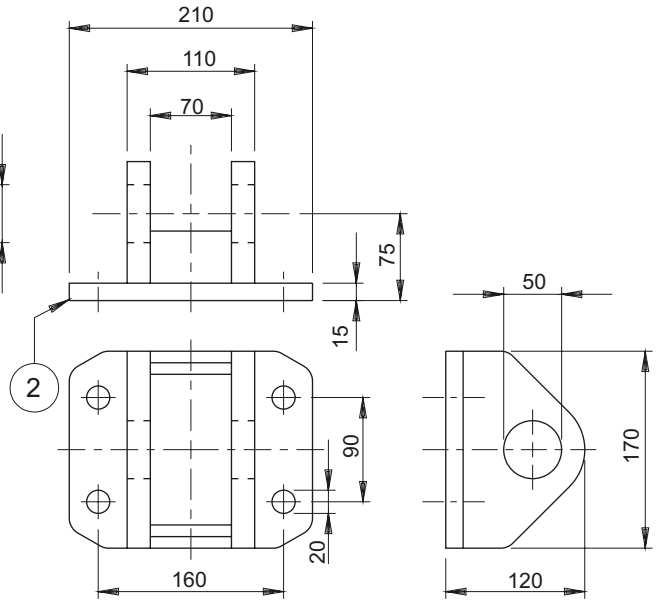
P.F.R. /174/

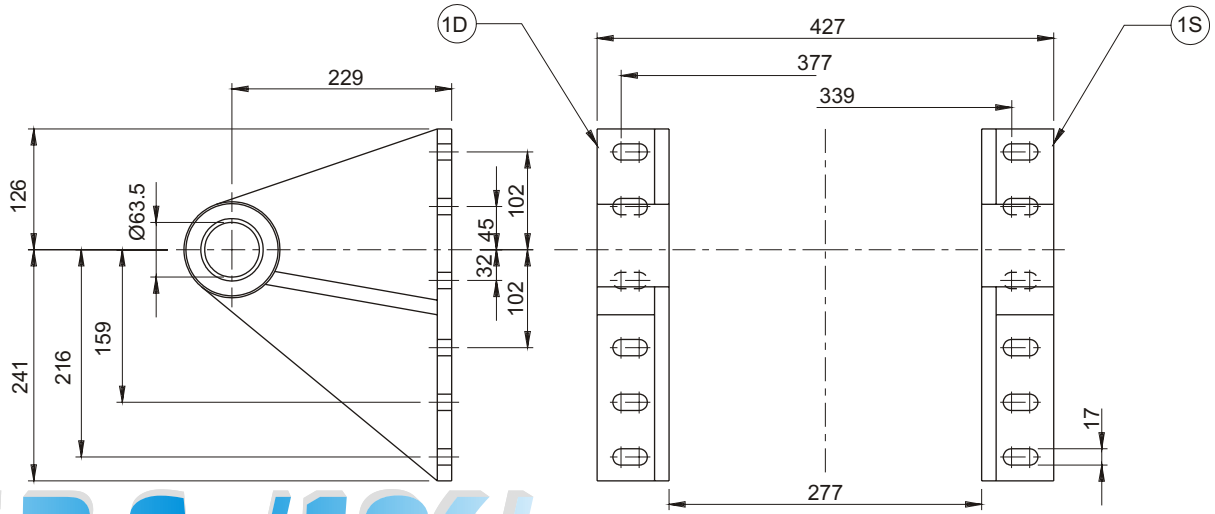




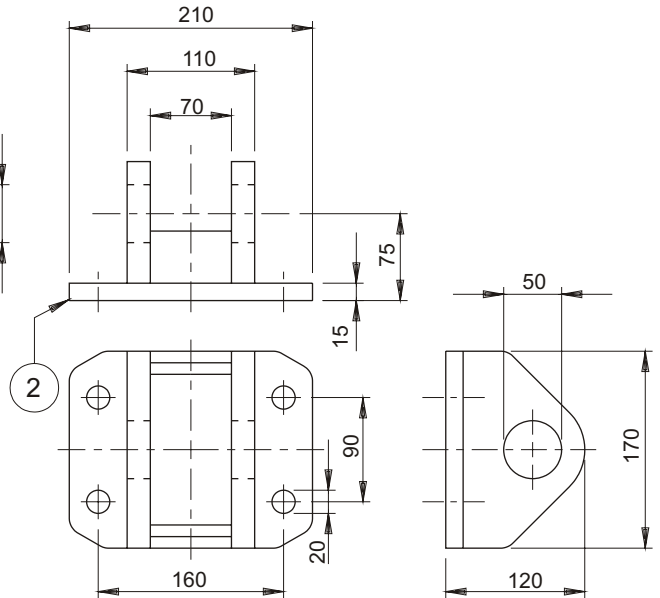
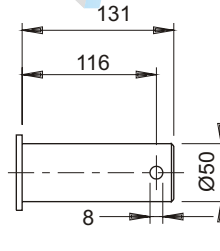
P.F.R.S. /221/

TARTÓ BRACKET PALIER HALTERUNG	KÓD CODE CODE BESTELL-Nr	TÖMEG MASS MASSE MASSE
		[kg]
1S	36 SSD 635	12
1D	36 SSS 635	12
2	36 CER 6236	11

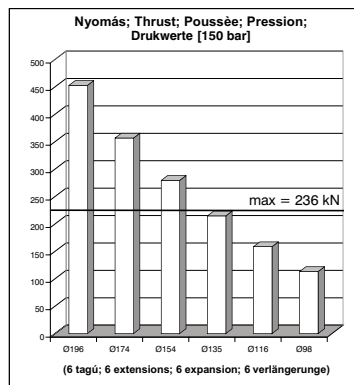
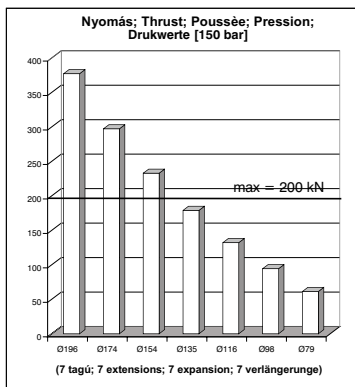


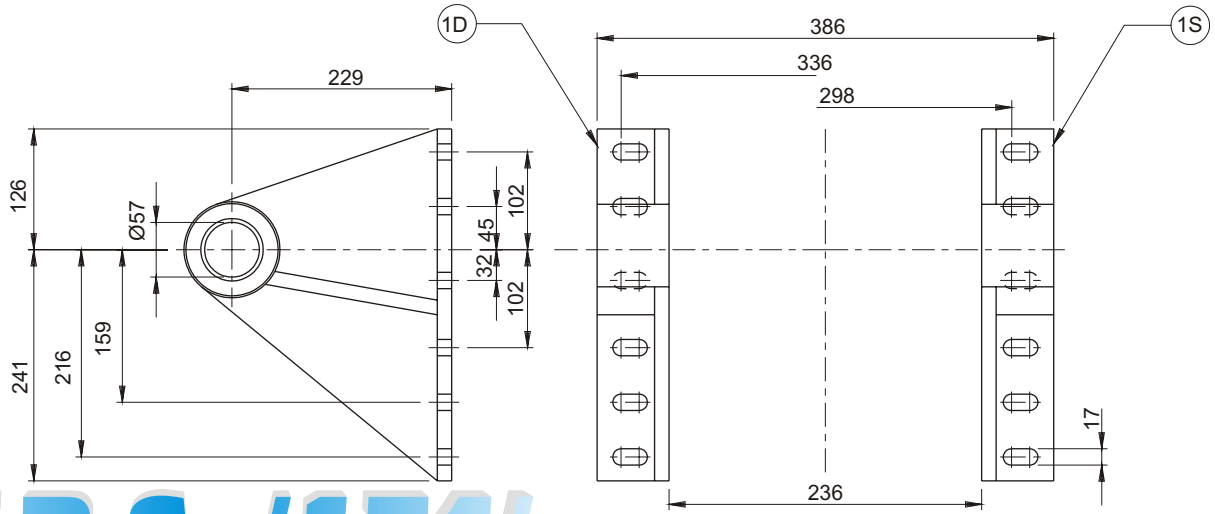


P.F.R.S. / 196

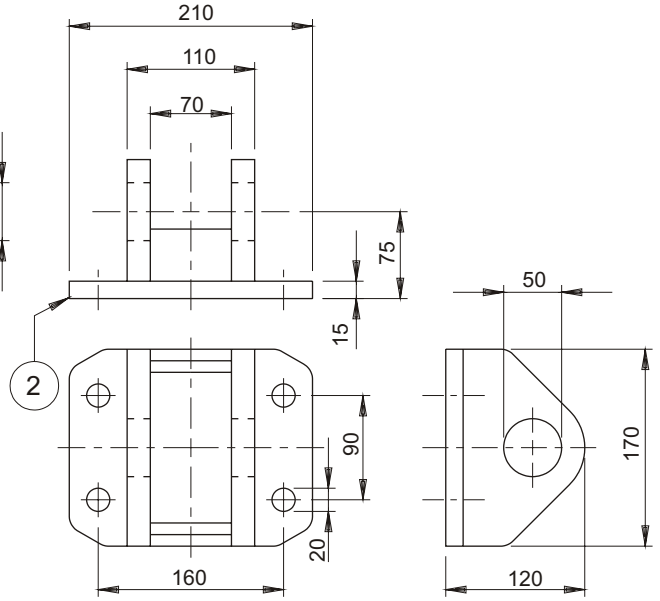
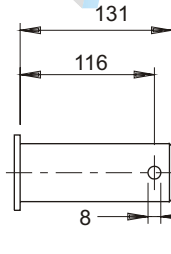


TARTÓ BRACKET PALIER HALTERUNG	KÓD CODE CODE BESTELL-Nr	TÖMEG MASS MASSE MASSE
		[kg]
1S	36 SSD 635	12
1D	36 SSS 635	12
2	36 CER 6236	11

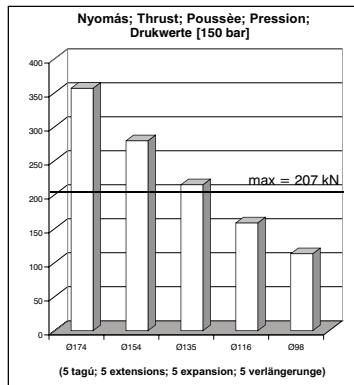
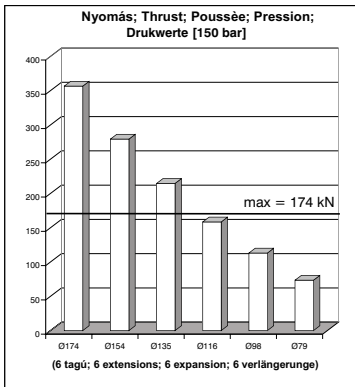


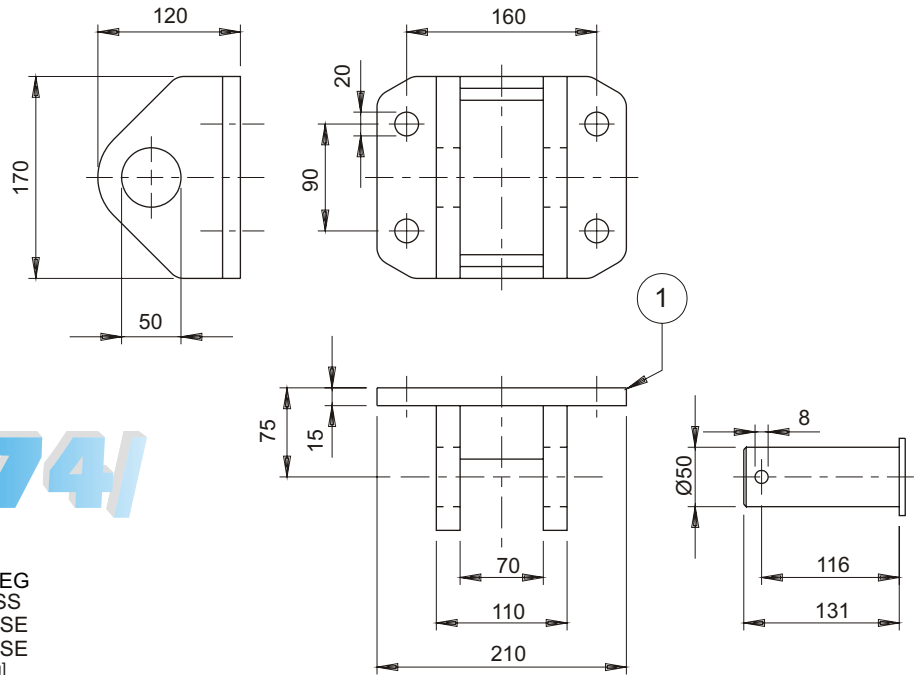


P.F.R.S. /174/



TARTÓ BRACKET PALIER HALTERUNG	KÓD CODE CODE BESTELL-Nr	TÖMEG MASS MASSE MASSE [kg]
1S	36 SSD 57	12
1D	36 SSS 57	12
2	36 CER 6236	11





P.F.S. /174/

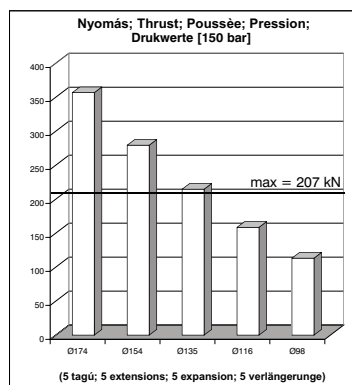
TARTÓ BRACKET PALIER HALTERUNG	KÓD CODE CODE BESTELL-Nr	TÖMEG MASS MASSE MASSE [kg]
1	36 CER 6236	11

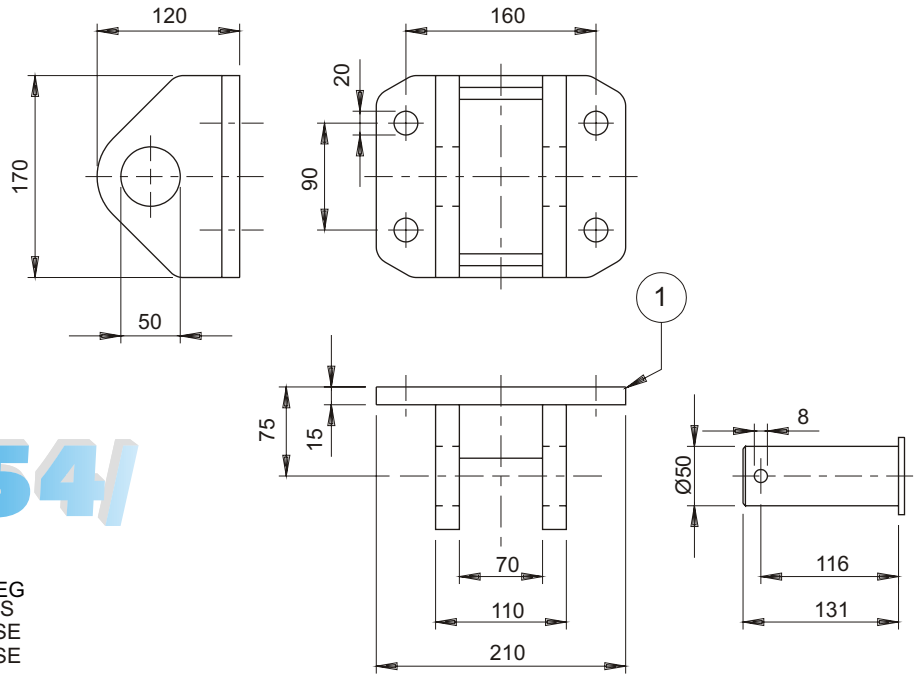
A TARTÓ A MUNKAHENGER ALSÓ ÉS FELSŐ
RÖGZÍTÉSI PONTJÁHOZ IS HASZNÁLHATÓ

THIS BRACKET CAN BE USED BOTH
AS UPPER BRACKET AND AS LOWER BRACKET

LE PALIER REPRÉSENTÉ PEUT ÊTRE UTILISÉ SOIT
COMME PALIER SUPÉRIEUR SOIT COMME PALIER INFÉRIEUR

DER DARGESTELLTE LAGERZYLINDER WIRD
SOWOHL WIE OBENE LAGERZYLINDER ALS
AUCH UNTERE LAGERZYLINDER GEBRAUCHEN





P.F.S. /154/

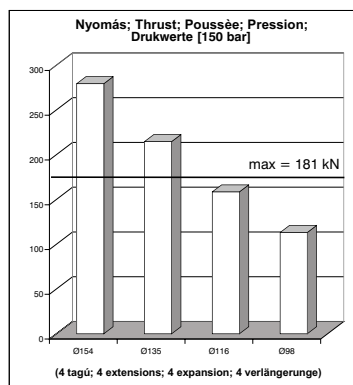
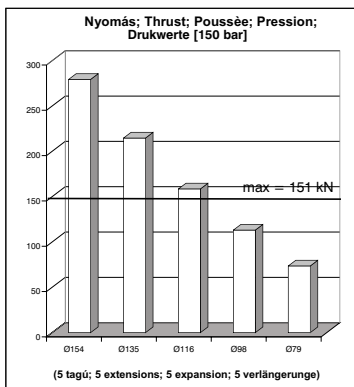
TARTÓ BRACKET PALIER HALTERUNG	KÓD CODE CODE BESTELL-Nr	TÖMEG MASS MASSE MASSE [kg]
1	36 CER 6236	11

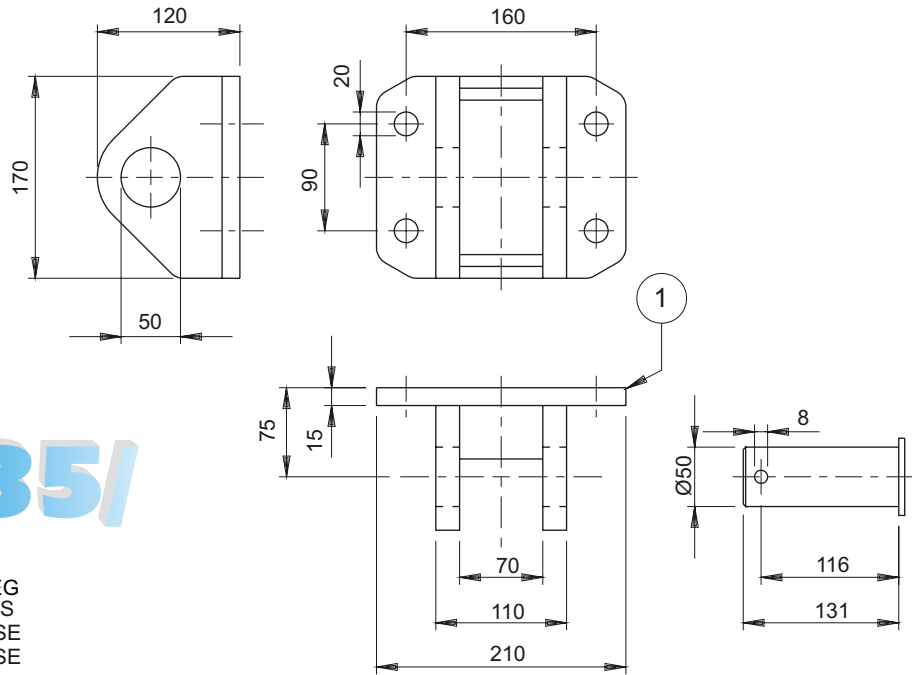
A TARTÓ A MUNKAHENGER ALSÓ ÉS FELSŐ
RÖGZÍTÉSI PONTJÁHOZ IS HASZNÁLHATÓ

THIS BRACKET CAN BE USED BOTH
AS UPPER BRACKET AND AS LOWER BRACKET

LE PALIER REPRÉSENTÉ PEUT ÊTRE UTILISÉ SOIT
COMME PALIER SUPÉRIEUR SOIT COMME PALIER INFÉRIEUR

DER DARGESTELLTE LAGERZYLINDER WIRD
SOWOHL WIE OBENE LAGERZYLINDER ALS
AUCH UNTERE LAGERZYLINDER GEBRAUCHEN





P.F.S. /135/

TARTÓ BRACKET PALIER HALTERUNG	KÓD CODE CODE BESTELL-Nr	TÖMEG MASS MASSE MASSE [kg]
1	36 CER 6236	11

1	36 CER 6236	11
---	-------------	----

A TARTÓ A MUNKAHENGER ALSÓ ÉS FELSŐ
RÖGZÍTÉSI PONTJÁHOZ IS HASZNÁLHATÓ

THIS BRACKET CAN BE USED BOTH
AS UPPER BRACKET AND AS LOWER BRACKET

LE PALIER REPRÉSENTÉ PEUT ÊTRE UTILISÉ SOIT
COMME PALIER SUPÉRIEUR SOIT COMME PALIER INFÉRIEUR

DER DARGESTELLTE LAGERZYLINDER WIRD
SOWOHL WIE OBENE LAGERZYLINDER ALS
AUCH UNTERE LAGERZYLINDER GEBRAUCHEN

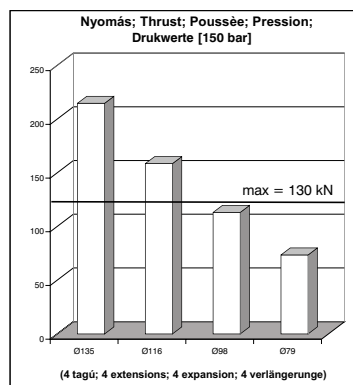
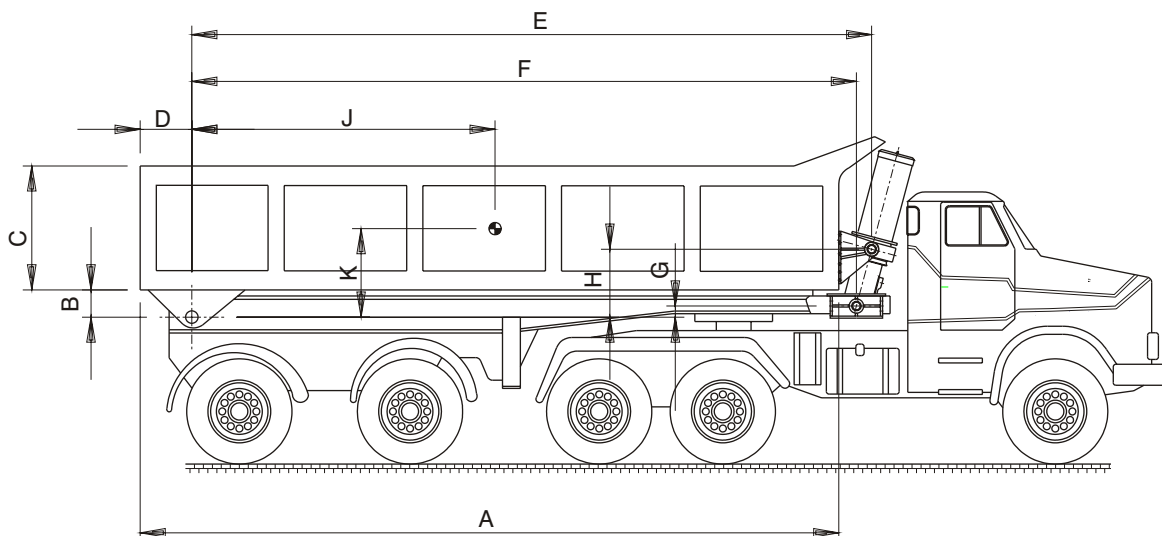


DIAGRAM (LÖKET;(SZÖG, SÚLY, NYOMÁS))
 DIAGRAM (STROKE;(ANGLE, WEIGHT, PRES SURE))
 DIAGRAMME (COURSE;(ANGLE, CHARGE, PRES SION))
 DIAGRAM (HUB;(WINKEL, GEWICHT, DRUCK))



KKT.



Táblázat 1

A=	[mm]
B=	[mm]
C=	[mm]
D=	[mm]
E=	[mm]
F=	[mm]
G=	[mm]
H=	[mm]
I=	[mm]
J=	[mm]
K=	[mm]
Wc=	[ton]
ρ =	[ton/m ³]
Wr=	[ton]
Tipo	

I = Szélesség

Width

Largeur

Weite

Wc = Felépítmény tömege

Body Weight

Poids de la caisse

Pritschengewicht

Wr = Hasznos teher

Carrying capacity

Charge utile

Nutzlast

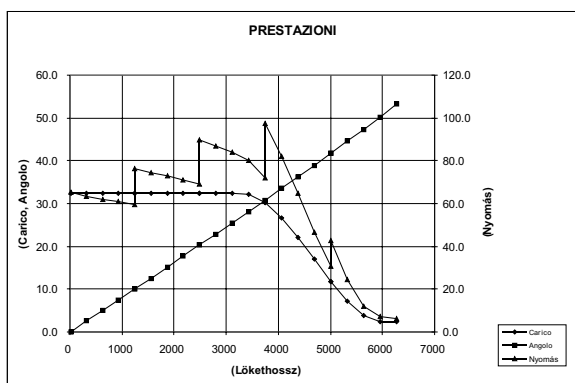
Amennyiben biztos akar lenni benne, hogy a választása helyes, küldje el az 1. táblázatban szereplő adatokat és megkapja a lenti példában bemutatott diagramot, valamint a táblázatot.

To make sure that your choice is correct, send the data shown in the table 1 to receive the tables and diagrams according to the example below.

Pour vérifier si votre choix est correct, envoyez les données du tableau 1 et vous recevrez les tableaux et les schémas selon l'exemple ci-dessous.

Um einschätzen zu können, ob die richtige Wahl getroffen wurde, bitten wir um Einsendung der Tabellenwerte. Sie erhalten dann von uns Tabellen und Diagramme, die so ähnlich sind wie die im nachstehenden Beispiel.

Példa; Example; Exemple; Beispiel



PFC5/ 174/ 6276

Kapott adatok:		Katalógus	
A=	7976 [mm]	Wc=	2.5 [ton]
B=	220 [mm]	ρ =	[ton/m ³]
C=	1500 [mm]	Wr=	30 [ton]
D=	640 [mm]		
E=	7068 [mm]		
F=	7000 [mm]	Front=	igen
G=	149 [mm]		
H=	503 [mm]		
I=	[mm]	Szélesség	
J=	3345 [mm]		
K=	1026 [mm]		
A munkahenger határértékei :		Smax=	207 [kN]
		Pmax=	185 [bar]

Elérhető maximális értékek billentésnél :			
Max α =	53.2 [°]	start=	26.9 [°]
Max Zc =	155.7 [kN]		
Max p =	98 [bar]		

Teleszkópos munkahenger		PFC5/174/6276						
	\emptyset	lökethossz	α	β	Y	X	p	Zc
	[mm]	[mm]	[°]	[°]	[mm]	[mm]	[bar]	[kN]
Zárt állapot	174	20	0.0	-10.9	3345	6846		156
I. tag	174	1221	10.0	4.6	3115	6989	63	142
II. tag	154	1246	20.3	11.1	2781	6897	76	129
III. tag	135	1255	30.8	16.9	2346	6740	90	103
IV. tag	116	1262	41.7	22.7	1813	6516	98	32
V. tag	98	1272	53.2	28.6	1184	6218	43	5
VI. tag								
VII. tag								
VIII. tag								

