

# F3 RE/AM

## RETRACTABLE TAIL-LIFT ALUMINIUM GUIDES, HYDRAULIC MOTOR AND BRAKE

load capacity:  1000 kg  
 1500 kg  
 2000 kg  
 2500 kg  
 3000 kg

available  not available yet

FUTURA



### APPLICATIONS

The retractable tail-lift F3RE is the ideal tail-lift for distribution vehicles due to its versatility, large platforms and ease of use.

The tail-lift is stowed away under the vehicle making it ideal for dock loading.

The F3RE is available for trucks and semi-trailers.

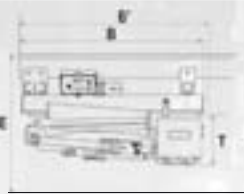
RETRACTABLE  
LIFTS

All hydraulic steel parts  
are treated with KTL hexacrylic  
electro-cataphoresis

SIDE FITTING  
1 FOLD PLATFORM



SIDE FITTING  
2 FOLDS PLATFORM



QUICK FITTING  
1 FOLD PLATFORM



SIDE FITTING

QUICK FITTING

	Mod.	Load capacity (center of gravity at 600 mm)	E max	Platform Depth* (example)	B	B'	T	Weight* Kg	B	B'	T	Weight* Kg
					min	min			min	min		
1 FOLD PLATFORM	F3 RE 15 C	1500 kg	1147	1433 (550 + 883)	1454	1554	318	470	-	-	-	-
	F3 RE 20 C	2000 kg	1147	1433 (550 + 883)	1454	1554	318	490	-	-	-	-
	F3 RE 15 H	1500 kg	1303	1633 (750 + 883)	1756	1856	318	505	1750	1855	487	502
	F3 RE 20 H	2000 kg	1303	1633 (750 + 883)	1756	1856	318	525	1750	1855	487	522
	F3 RE 15 HS	1500 kg	1544	1633 (750 + 883)	1909	2009	318	520	1903	2008	487	517
	F3 RE 20 HS	2000 kg	1544	1633 (750 + 883)	1909	2009	318	540	1903	2008	487	537
2 FOLDS PLATFORM	F3 RE 15 HSS	1500 kg	1600	1633 (750 + 883)	2010	2110	318	535	2004	2109	487	532
	F3 RE 20 HSS	2000 kg	1600	1633 (750 + 883)	2010	2110	318	555	2004	2109	487	552
	F3 RE 15 C	1500 kg	1147	1083 (600 + 483)	1123	1118	375	450	-	-	-	-
	F3 RE 20 C	2000 kg	1147	1083 (600 + 483)	1123	1118	375	470	-	-	-	-
	F3 RE 15 H	1500 kg	1303	1283 (700 + 583)	1226	1221	375	485	1220	1221	544	482
	F3 RE 20 H	2000 kg	1303	1283 (700 + 583)	1226	1221	375	505	1220	1221	544	502
1 FOLD PLATFORM	F3 RE 15 HS	1500 kg	1544	1583 (850 + 733)	1379	1374	375	520	1373	1374	544	517
	F3 RE 20 HS	2000 kg	1544	1583 (850 + 733)	1379	1374	375	540	1373	1374	544	537
2 FOLDS PLATFORM	F3 RE 15 HSS	1500 kg	1600	1783 (950 + 833)	1480	1475	375	550	1474	1475	544	547
	F3 RE 20 HSS	2000 kg	1600	1783 (950 + 833)	1480	1475	375	570	1474	1475	544	567

\*Platforms depth from 1333 mm to 1983 mm. \*\*Approximate weight for tail-lift with platform width 2450 mm.

Centre of gravity of the vehicle depending on the type of arm and the size of the installations on the vehicle (see assembly instructions).

The above mentioned weights are approximate and may vary according to production. Anteo reserves the right to change weights and technical specifications without prior notice. No indemnity for damages can be claimed from Anteo for changes in technical specifications and/or in weight.